

1.3 SALES NOTES

autumn/winter 2021



NOA
NOA



Happiness – the longing for repetition



REPETITION... PRACTICE, PREPARE, STRENGTHEN, REFINE, REPEAT

To repeat can be almost meditative.
Choosing a theme, go in depth with it, and go through it detail by detail.
Refine, sophisticate, and in so doing, achieve the sublime.
That is the beauty of repetition.
In repetition lies the recognition, the familiar.
Recognition establishes peace of mind in a precarious time
and brings joy towards the well-known.
Time stands still.
Timeless.
Time and place to concentration and devotion towards details.
An attempt to design and create harmony.
Our present time is about limiting and focus. Extend the lifetime and add the value of durability.
It is about simplification and curate.
The focus is on quality and the perfect fit. To do what we are best at.
The design that has passed the test and proven to be continuously interesting should live on.
By being aware of our strengths we become stronger.

1.3

We have looked through our Essentials. New has come, others have gotten an inspection.
New attention to the already known. New classics has been added.

Flower print, paisley patterns, ditzy floral, in cogent order,
shadow prints, polka dots, and yarn dyed stripes.
Recognizable and repeated.
Our inspiration comes from timeless design and fineart. We celebrate natural forms
and stylised botanicals in toned down colours.
The colours are authentic and familiar. Grounded nostalgic colours tap into the comfort of
the familiar at a time of rapid change, drawing on the appeal of nature and nostalgia.
They are authentic and relatable, rather than saturated and flashy.
Several colour tones are repeated throughout the collection.
More tones will continue with us into spring. The lifetime extends.

"We're talking about how every garment has to have a purpose,
and we have to have time to lean in and work towards perfection. Things are never perfect,
but we want to really develop and refine our designs and keep making them better.
We want to keep making what we do better.
That's been a huge focus. "

We hope you will enjoy

1.3 COLOURS JULY



01185 red clay



00354 rosewood



01111 brunnera blue



01186 stormy sea



01181 cherry mahogany



00664 fog



00690 dress blues

1.3 CORE COLOURS



00505 cloud dancer



00712 tofu



00929 bone white



00664 fog



00981 oatmeal



00715 moonlight



00000 black



00690 dress blues

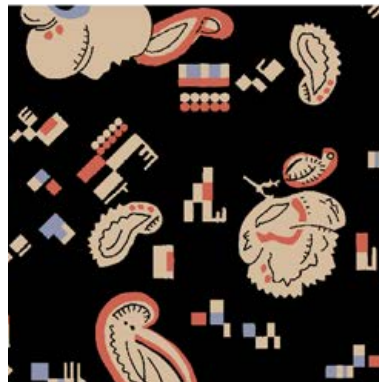


00417 adobe rose

1.3 PRINT OVERVIEW JYLY



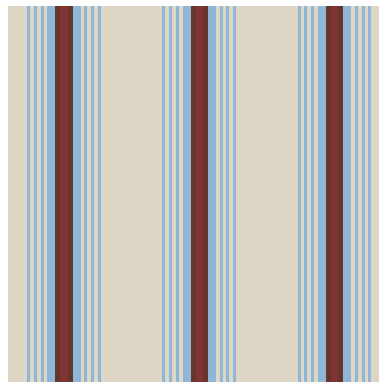
antique bloom organic poplin
print red 00465



soft moss
print black 00471



drapy jersey
print brown 00474



essential bonded cotton
art off white 00858



cotton check
art blue 00477

1.3 PRINT HISTORY JULY

Our print



Own inhouse design

< *ANTIQUE BLOOM* *ORGANIC POPLIN*

This delicate floral print with a vintage feel is timeless and classic. It is designed and drawn by hand inhouse at Noa Noa design studio.

Vintage inspired print

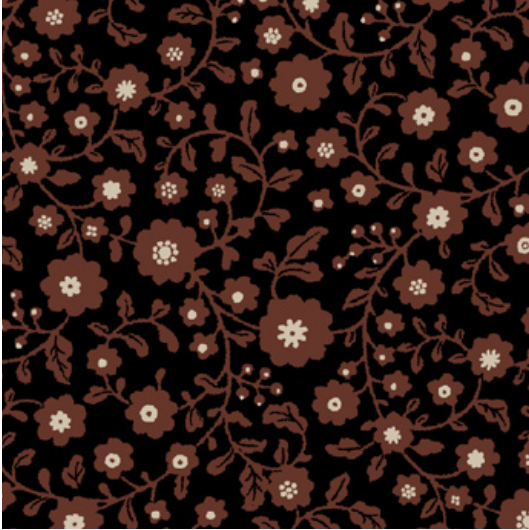
SOFT MOSS >

This floral print with abstract funny squares is inspired from an old piece of fabric from the in house Noa Noa vintage library. It is re-designed and drawn by hand inhouse at Noa Noa design studio.

Our print



Our print



Vintage inspired print
< ***DRAPY JERSEY***

An antique shirt from the 70's,
originally found at the antique market
“marché aux puces saint-ouen” in Paris,
has been the inspiration for this print.
The delicate swirly flowers and leaves has
been re-drawn by hand inhouse at Noa
Noa design studio and filled with colours
from the july colourcard.



1.3 AUTUMN/WINTER 2021



ANTIQUE BLOOM ORGANIC VOILE – 1-10670-1

Tunic, Long sleeve
100% cotton (organic)
Size: S - L



ANTIQUE BLOOM ORGANIC VOILE – 1-10671-1

Blouse, Long sleeve
100% cotton (organic)
Size: 32 - 46



COTTON CHECK – 1-10689-1

Light outerwear, Long sleeve
39% cotton, 27% viscose, 31% polyester, 3% elastane
Size: 32 - 46



COTTON CHECK – 1-10690-1

Trousers, Skimpy length
39% cotton, 27% viscose, 31% polyester, 3% elastane
Size: 32 - 46



ESSENTIAL LACE JERSEY



ESSENTIAL LACE JERSEY – 1-6716-14

Top, Strap
95% viscose, 5% elastane
Size: XXS - XXL



ESSENTIAL LACE JERSEY – 1-0470-36

Dress strap, Strap
95% viscose, 5% elastane
Size: XXS - XXL



ESSENTIAL LACE JERSEY – 1-1313-42

Leggings, Long
95% viscose, 5% elastane
Size: XXS - XXL



ESSENTIAL LACE JERSEY



ESSENTIAL LACE JERSEY – 1-6232-19

T-shirt ,Long Sleeve
95% viscose, 5% elastane
Size: XXS - XXL



ESSENTIAL LACE JERSEY – 1-8569-7

T-shirt, Long Sleeve
95% viscose, 5% elastane
Size: XXS - XXL



ESSENTIAL LACE JERSEY – 1-6847-8

T-shirt, Long Sleeve
95% viscose, 5% elastane
Size: XXS - XXL



DRAPY JERSEY



DRAPY JERSEY – 1-10646-2

T-shirt, Short sleeve
95% viscose, 5% elastane
Size: XXS - XXL



DRAPY JERSEY – 1-10591-2

Skirt, Below knee
95% viscose, 5% elastane
Size: XXS - XXL



DRAPY JERSEY – 1-10738-1

Dress long sleeve, Below knee
95% viscose, 5% elastane
Size: XXS - XXL



DRAPY JERSEY – 1-10590-2

Dress long sleeve, Below knee
95% viscose, 5% elastane
Size: XXS - XXL



1.3 AUTUMN/WINTER 2021



LIGHT VISCOSE STRUCTURE – 1-10681-1

Blouse, Short sleeve
100% viscose
Size: 32 - 46



LIGHT VISCOSE STRUCTURE – 1-10682-1

Trousers, Long
100% viscose
Size: 32 - 46



LIGHT WEIGHT INDIGO – 1-10379-1

Dress long sleeve, Knee length
100% cotton
Size: 32 - 46





ESSENTIAL BONDED COTTON - 1-10515-2

Blouse, Long sleeve
100% cotton
Size: 32 - 46



ESSENTIAL BONDED COTTON - 1-8981-17

Tunic, Long sleeve
100% cotton
Size: 32 - 46

1.3 AUTUMN/WINTER 2021



ESSENTIAL SOFT STRUCTURE COAT – 1-7445-12

Light outerwear, long sleeve
62% polyester, 33% viscose, 5% elastane
Size: 32 - 46



ESSENTIAL LEGGINS – 1-8502-15

Leggings, Long
60% cotton, 30% lycocell, 7% polyester, 3% elastane
Size: 32 - 46





SOFT MOSS – 1-10685-1

Blouse, Short sleeve
50% viscose (Eco Vero), 50% viscose
Size: 32 - 46



LIGHT VISCOSE STRUCTURE – 1-10686-1

Skirt, Short
50% viscose (Eco Vero), 50% viscose
Size: 32 - 46



LIGHT VISCOSE STRUCTURE – 1-10684-1

Tunic, Long sleeve
50% viscose (Eco Vero), 50% viscose
Size: 32 - 46



LIGHT VISCOSE STRUCTURE – 1-10683-1

Dres long sleeve, 3/4 length
50% viscose (Eco Vero), 50% viscose
Size: 32 - 46

ESSENTIAL STRETCH



ESSENTIAL STRETCH – 1-10667-1

Skirt, Below knee
97% cotton, 3% elastane
Size: 32 - 46



ESSENTIAL STRETCH JERSEY – 1-10665-1

Trousers, Long
97% cotton, 3% elastane
Size: 32 - 46



ESSENTIAL STRETCH – 1-10666-1

Trousers, Skimpily length
97% cotton, 3% elastane
Size: 32 - 46



1.3 AUTUMN/WINTER 2021



ORGANIC COTTON KNIT – 1-10721-1

Pullover, Short sleeve
100% cotton (organic)
Size: XXS - XXL



ORGANIC COTTON KNIT – 1-10720-1

Cardigan, Long sleeve
100% cotton (organic)
Size: XXS - XXL



ORGANIC BLUE CHECK – 1-10765-1

Blouse, Long sleeve
100% cotton (organic)
Size: 32 - 46



ORGANIC BLUE CHECK – 1-10764-1

Dress long sleeve, Knee length
100% cotton (organic)
Size: 32 - 46



1.3 COLOURS AUGUST



01106 maroon



01188 malaga



00896 toasted coconut



01132 ginger bread



00664 fog



01111 brunnera blue



00757 navy peony



00690 dress blues



00784 sea moss



01187 dusky green

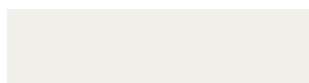


01177 fennel seed

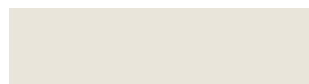


01189 straw

CORE COLOURS



00505 cloud dancer



00712 tofu



00929 bone white



00664 fog



00981 oatmeal



00715 moonlight



00000 black

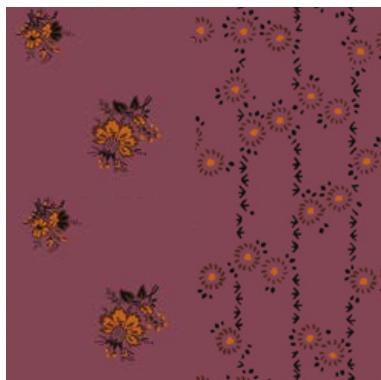


00690 dress blues

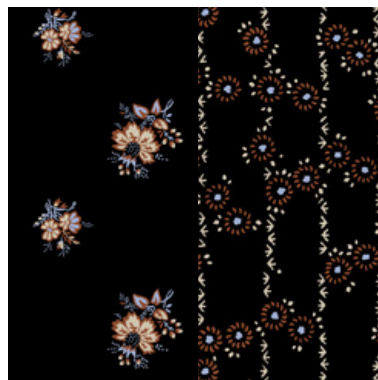


00417 adobe rose

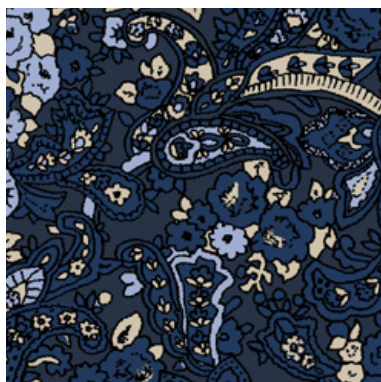
1.3 PRINT OVERVIEW AUGUST



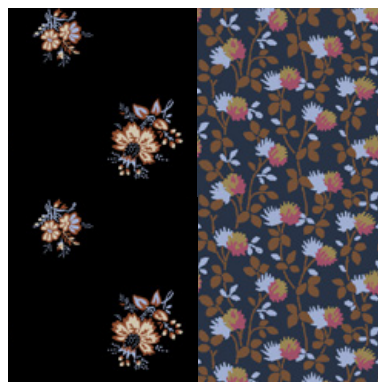
floral moss
print rosa 00718



floral moss
print black 00471



paisley air crepe
print blue 00464



organic floral cotton
print black 00471

1.3 PRINT HISTORY AUGUST

Main print

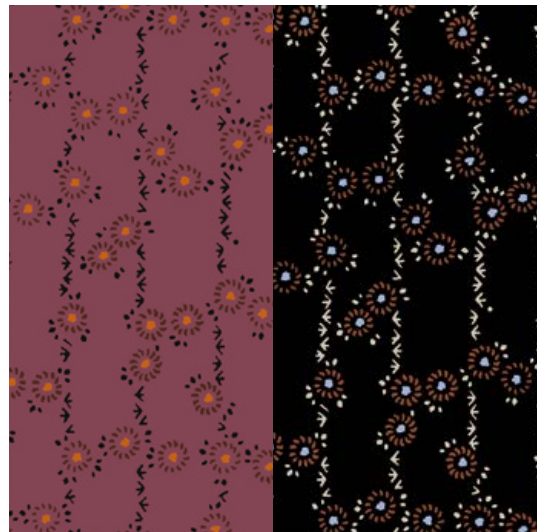


Vintage inspired print

< **FLORAL MOSS** / **ORGANIC FLORAL COTTON**

An antique shirt, originally found at the antique market “marché aux puces saint-ouen” in Paris, has been the inspiration for this print. The delicate flower bouquets has been re-drawn by hand inhouse at Noa Noa design studio and filled with colours from the august colourcard.

Trim print

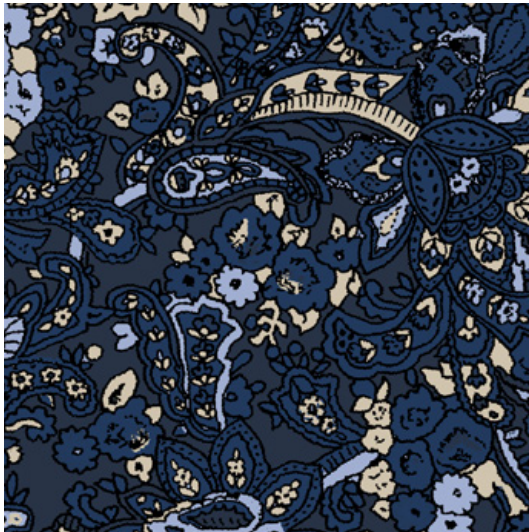


Vintage inspired print

FLORAL MOSS >

This floral print is inspired from a decorative japanese card. Time-wise the card is dated from a period known as the Meiji period, a Japanese era dating from 1868 to 1912.

Our print



Vintage inspired print

< ***PAISLEY AIR CREPE***

This delicate tiny paisley print is inspired from a vintage printed garment that we originally found at the antique market “marché aux puces saint-ouen” in Paris. The pattern is re-drawn by hand inhouse at Noa Noa design studio.

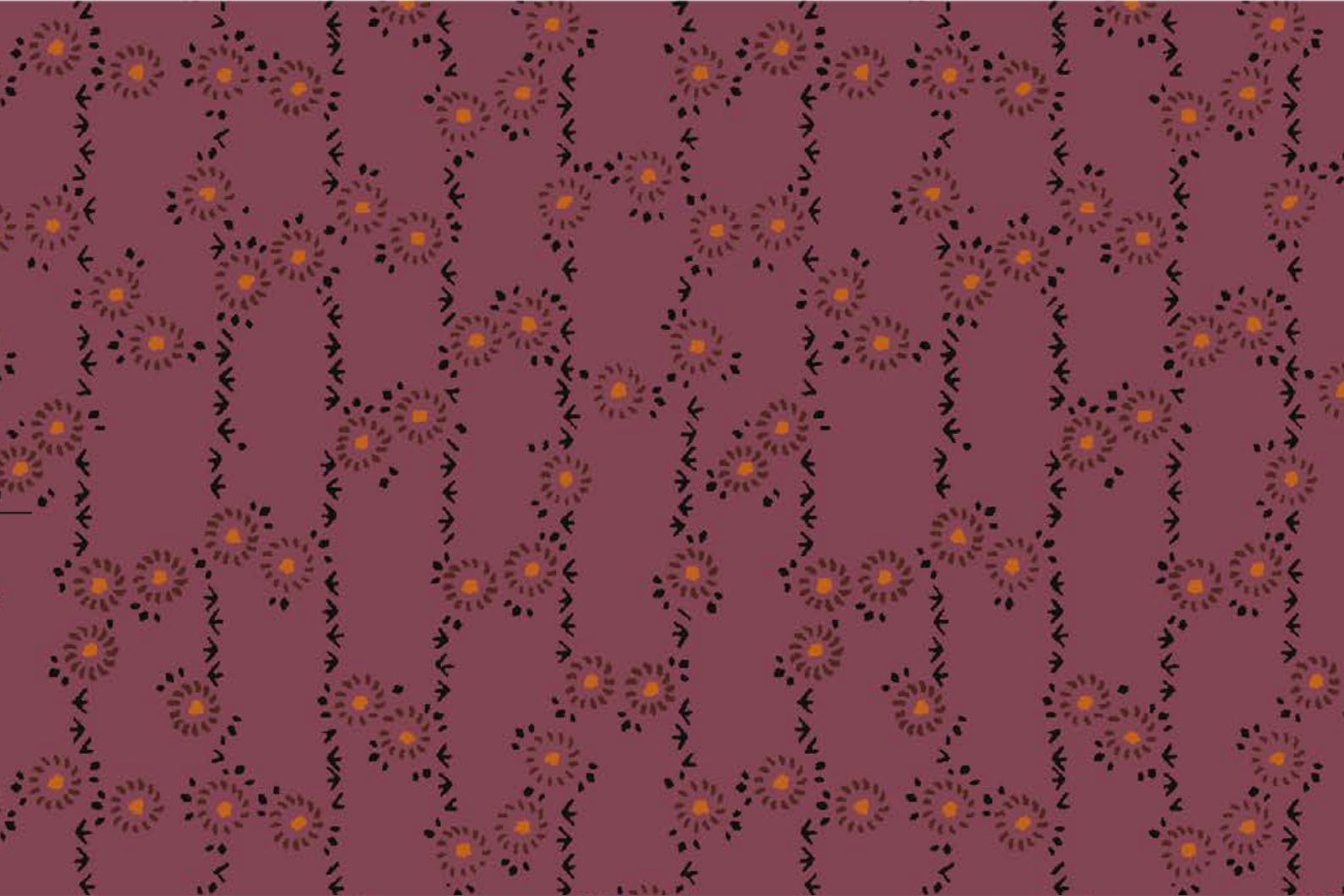
Vintage inspired print

ORGANIC FLORAL COTTON >

This ditzy floral print comes from a printed fabric piece found at the flea-market “marché aux puces saint-ouen” in Paris. It is re-drawn by hand inhouse at Noa Noa design studio.

Trim print



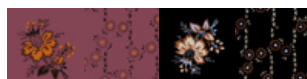


FLORAL MOSS



FLORAL MOSS – 1-10702-1

Blouse, Short sleeve
50% viscose (Eco Vero), 50% viscose
Size: 32 - 46

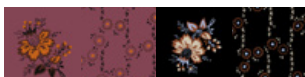


23



FLORAL MOSS – 1-10701-1

Tunic, 3/4 sleeve
50% viscose (Eco Vero), 50% viscose
Size: 32 - 46



FLORAL MOSS – 1-10700-1

Dress short sleeve, 3/4 length
50% viscose (Eco Vero), 50% viscose
Size: 32 - 46

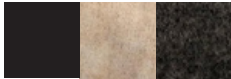


LIGHT ALPACA KNIT



LIGHT ALPACA KNIT – 1-10779-1

Pullover, Long sleeve
42% wool, 42% polyamide, 14% alpaca, 2% spandex
Size: XXS - XXL



LIGHT ALPACA KNIT – 1-10826-1

Pullover, 3/4 sleeve
42% wool, 42% polyamide, 14% alpaca, 2% spandex
Size: XXS - XXL



LIGHT ALPACA KNIT – 1-10778-1

Cardigan, Long sleeve
42% wool, 42% polyamide, 14% alpaca, 2% spandex
Size: XXS - XXL





ORGANIC FLORAL COTTON – 1-10695-1

Blouse, Long sleeve
100% cotton (organic)
Size: 32 - 46



ORGANIC FLORAL COTTON – 1-10694-1

Jacket, Long sleeve
100% cotton (organic)
Size: 32 - 46

VISCOSE KNIT



ESSENTIAL VISCOSE KNIT – 1-10771-1

Pullover, Short sleeve
72% viscose, 28% polyamide
Size: XXS - XXL



ESSENTIAL VISCOSE KNIT – 1-10770-1

Pullover, Long sleeve
72% viscose, 28% polyamide
Size: XXS - XXL



ESSENTIAL VISCOSE KNIT – 1-8395-8

Skirt, Knee length
72% viscose, 28% polyamide
Size: XXS - XXL



ESSENTIAL VISCOSE KNIT – 1-9410-6

Dress long sleeve, Below knee
72% viscose, 28% polyamide
Size: XXS - XXL



1.3 AUTUMN/WINTER 2021



ESSENTIAL GARBADINE – 1-10733-1

Jacket, Long sleeve
73% polyester, 22% viscose, 5% elastane
Size: 32 - 46



ESSENTIAL GARBADINE – 1-10734-1

Trousers, Long
73% polyester, 22% viscose, 5% elastane
Size: 32 - 46



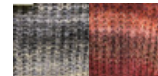
ORGANIC COTTON DOBBY – 1-10699-1

Blouse, Long sleeve
100% cotton (organic)
Size: 32 - 46



SPACEDYED KNIT – 1-10725-1

Pullover, Long sleeve
27% superfine alpaca, 28% wool, 45% polyamide
Size: S - L



ESSENTIAL DRESSY CREPE



ESSENTIAL DRESSY CREPE – 1-10735-1

Dress long sleeve, 3/4 length
55% viscose, 45% viscose (Eco Vero)
Size: 32-46



ESSENTIAL DRESSY CREPE – 1-10736-1

Dress long sleeve, Below knee
55% viscose, 45% viscose (Eco Vero)
Size: 32-46



ESSENTIAL DRESSY CREPE – 1-10737-1

Skirt, 3/4 length
55% viscose, 45% viscose (Eco Vero)
Size: 32-46





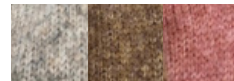
ALPACA KNIT – 1-10755-1

Pullover, Long sleeve
53% wool, 30% polyamide, 17% alpaca
Size: XXS - XXL



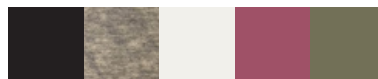
ALPACA KNIT – 1-10753-1

Pullover, Long sleeve
53% wool, 30% polyamide, 17% alpaca
Size: XXS - XXL



ESSENTIAL SINGLE JERSEY TEE – 1-10773-1

T-shirt, short sleeve
100% cotton
Size: XXS - XXL



ESSENTIAL ORGANIC CORDUROY

NOA
40 years of
NOA

Through our 40 year of existing corduroy has been a signature fabric. We love how colours are represented in corduroy and how corduroy is adding tactility and warmth to product without compromising functionality. Today our essential Corduroy program off course is offered in 100% organic cotton. True keepsake pieces.



ESSENTIAL ORGANIC CORDUROY – 1-9854-4

Jacket, Long sleeve
100% cotton (organic)
Size: 32 - 46



ESSENTIAL ORGANIC CORDUROY – 1-9855-4

Trousers, Long
100% cotton (organic)
Size: 32 - 46



ESSENTIAL ORGANIC CORDUROY – 1-10034-4

Skirt, Above knee
100% cotton (organic)
Size: 32 - 46



CHECKED WOOL



CHECKED WOOL – 1-10660-1

Heavy outerwear, Long sleeve
50% wool , 50% polyester
Size: 32 - 46



CHECKED WOOL – 1-10659-1

Heavy outerwear, Long sleeve
50% wool , 50% polyester
Size: 32 - 46



**ESSENTIAL ORGANIC POPLIN – 1-10517-3**

Blouse, Long sleeve
100% cotton (organic)
Size: 32 - 46



PAISLEY AIR CREPE



PAISLEY AIR CREPE – 1-10714-1

Blouse, Short sleeve
57% viscose (Eco Vero), 43% viscose
Size: 32 - 46



PAISLEY AIR CREPE – 1-10715-1

Trousers, Long
57% viscose (Eco Vero), 43% viscose
Size: 32 - 46



PAISLEY AIR CREPE – 1-10713-1

Dress long sleeve, 3/4 length
57% viscose (Eco Vero), 43% viscose
Size: 32 - 46

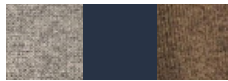


ESSENTIAL COTTON CASHMERE



ESSENTIAL COTTON CASHMERE – 1-7291-18

Cardigan, Long sleeve
90% cotton, 10% cashmere
Size: XXS - XXL



ESSENTIAL COTTON CASHMERE – 1-10776-1

Cardigan, Long sleeve
90% cotton, 10% cashmere
Size: XXS - XXL



ESSENTIAL MERINO KNIT



ESSENTIAL MERINO KNIT – 1-10324-2

Pullover, Long sleeve
100% merino wool
Size: XXS - XXL



ESSENTIAL MERINO KNIT – 1-10752-1

Pullover, Long sleeve
100% merino wool
Size: XXS - XXL



ESSENTIAL MERINO KNIT – 1-9044-4

Dress long sleeve, Above knee
100% merino wool
Size: XXS - XXL



1.3 AUTUMN/WINTER 2021



LIGHT MOSS – 1-10730-1

Blouse, 3/4 sleeve
100% viscose
Size: 32 - 46



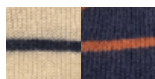
LIGHT MOSS – 1-10729-1

Dress long sleeve, 3/4 length
100% viscose
Size: 32 - 46



SOFT CABLE KNIT – 1-10724-1

Pullover, Long sleeve
43% Mohair, 30% Polyamide, 27% Acrylic
Size: S - L



ESSENTIAL COTTON MELANGE



ESSENTIAL COTTON MELANGE – 1-7914-15

Pullover, Long sleeve
100% cotton
Size: XXS - XXL



ESSENTIAL COTTON MELANGE – 1-9643-3

Pullover, Long sleeve
100% cotton
Size: XXS - XXL



ESSENTIAL COTTON MELANGE – 1-7909-15

Cardigan, Long sleeve
100% cotton
Size: XXS - XXL



ESSENTIAL COTTON MELANGE – 1-5603-30

Cardigan, Long sleeve
100% cotton
Size: XXS - XXL



1.3 AUTUMN/WINTER 2021



FAUX FUR – 1-10662-1

Heavy outerwear, Long sleeve
100% polyester
Size: 32 - 46



CLASSIC WOOL – 1-10664-1

Heavy outerwear, Long sleeve
50% wool 50% polyester
Size: 32 - 46



CLASSIC WOOL – 1-10663-1

Heavy outerwear, Long sleeve
50% wool 50% polyester
Size: 32 - 46



1.3 AUTUMN/WINTER 2021



NOA QUILTED COAT – 1-10275-3

Light outerwear, Long sleeve
100% polyester (recycled)
Size: 32 - 46



43



NOA NOA SHOPPER – 1-10845-1

Large bag
100% Cotton (recycled)
One size

1.3 AUTUMN/WINTER 2021



1.3 COLOURS AND PRINT OVERVIEW OTN



01181 cherry mahogany



00000 black



01186 stormy sea



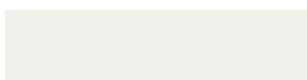
01132 ginger bread



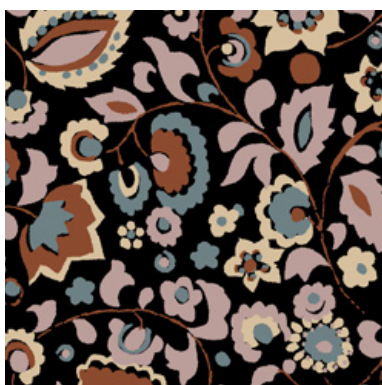
00417 adobe rose



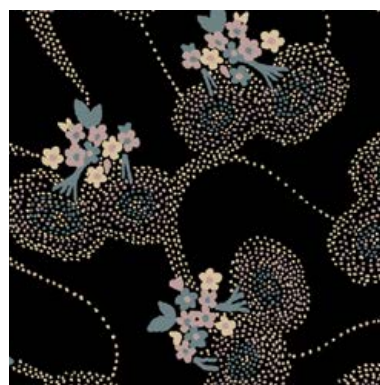
00664 fog



00505 cloud dancer



otn printed ramie
print multicolour 00549



otn sheer tencel
print black 00471



otn organic cotton quilt
print brown 00474

Our print



Vintage inspired print

< *OTN PRINTED RAMIE*

This kind of print is in the category called Indienne. It is a European version of traditional Indian designs. It has a more sophisticated and less of a “block print” look. The origion of this print is either English or French, from the late 1800’s and was primarily used for fashion. It is re-drawn by hand inhouse at Noa Noa design studio.

Our print



Vintage inspired print

OTN SHEER TENCEL >

This swirly dotted floral print comes from a printed shirt found at the flea-market “marché aux puces saint-ouen” in Paris. It is re-drawn by hand inhouse at Noa Noa design studio.

Our print



Own inhouse design

< *OTN ORGANIC COTTON QUILT - MAIN PRINT*

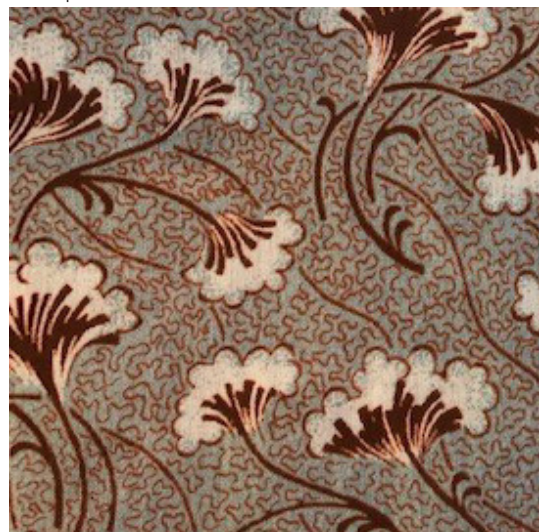
This big scale detailed floral print is a celebration of natural forms and stylised botanicals. It is designed and drawn by hand inhouse at Noa Noa design studio.

Vintage inspired print

OTN ORGANIC COTTON QUILT >

This print has a feel of art nouveau with its sinuous curves of natural forms and abstract plants and flowers. It is re-drawn by hand inhouse at Noa Noa design studio.

Trim print



**OTN SHEER TENCEL – 1-10679-1**

Blouse, Long sleeve
100% tencel
Size: 32 - 46





OTN SHEER TENCEL – 1-10678-1

Dress long sleeve, Knee length
100% tencel
Size: 32 - 46

1.3 AUTUMN/WINTER 2021



OTN ORGANIC LINEN DECO – 1-10677-1

Various, Collar
100% linen (organic)
Size: One size



OTN ORGANIC LINEN DECO – 1-10676-1

Blouse, Long sleeve
100% linen (organic)
Size: 32 - 46



OTN ORGANIC CORDUROY – 1-10674-1

Trousers, Long
98% cotton (organic), 2% elastane
Size: 32 - 46



NOA
40 years of
NOA

*Our desire for a slower pace of life
and balance tap into homespun techniques.
Quilting adds a personal touch to garments.
At Noa Noa we embrace the imperfect aesthetic
and value the time-tested artisanal skill,
therefore quilted coats, jackets and vest are
valued members in the product range and has
been so from the absolute beginning.*



OTN ORGANIC COTTON QUILT – 1-10669-1

Vest
100% cotton (organic)
Size: 32 - 46



OTN ORGANIC COTTON QUILT – 1-10530-3

Jacket, 3/4 sleeve
100% cotton (organic)
Size: 32 - 46



OTN PRINTED SILK SCARF – 1-10722-1

Scarf
100% silk
One size



OTN PRINTED RAMIE – 1-10673-1

Various, Collar
100% ramie
Size: 32 - 46



OTN PRINTED RAMIE – 1-10672-1

Blouse, Lone sleeve
100% ramie
Size: 32 - 46





OTN WOOL KNIT – 1-10743-1

Vest
100% wool
Size: S - L



OTN WOOL KNIT – 1-10742-1

Pullover, Long sleeve
100% wool
Size: S - L





1.3 COLOURS SEPTEMBER



01111 brunnera blue



00807 blue surf



01191 toffee



00436 india ink



01190 olive green

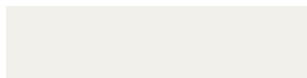


00000 black



00109 army green

CORE COLOURS



00505 cloud dancer



00712 tofu



00929 bone white



00664 fog



00981 oatmeal



00715 moonlight



00000 black

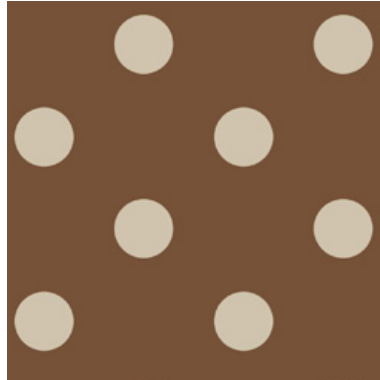


00690 dress blues

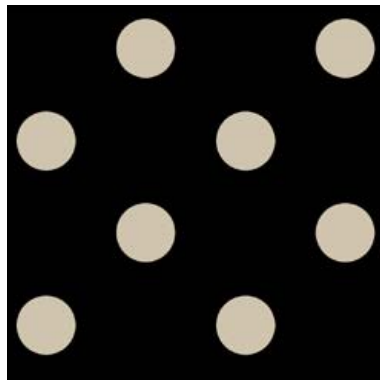


00417 adobe rose

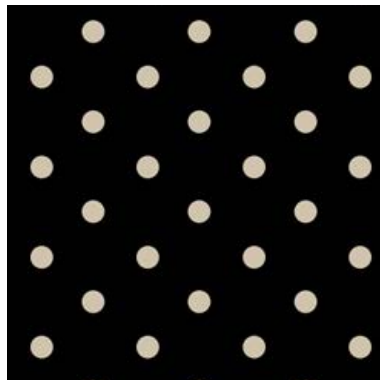
1.3 PRINT OVERVIEW SEPTEMBER



dotted moss
print brown 00474



dotted moss
print black 00471



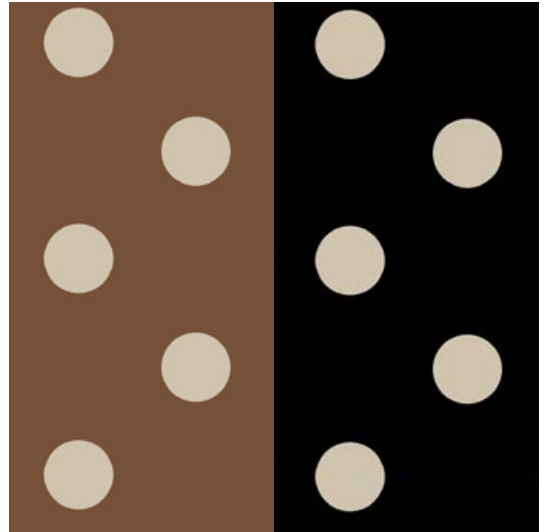
dotted jersey
print black 00471

Own inhouse design

DOTTED MOSS >

Polka dots..... A Noa Noa evergreen,
a classic that still has its merits.
Recognizable and repeated.

Our print



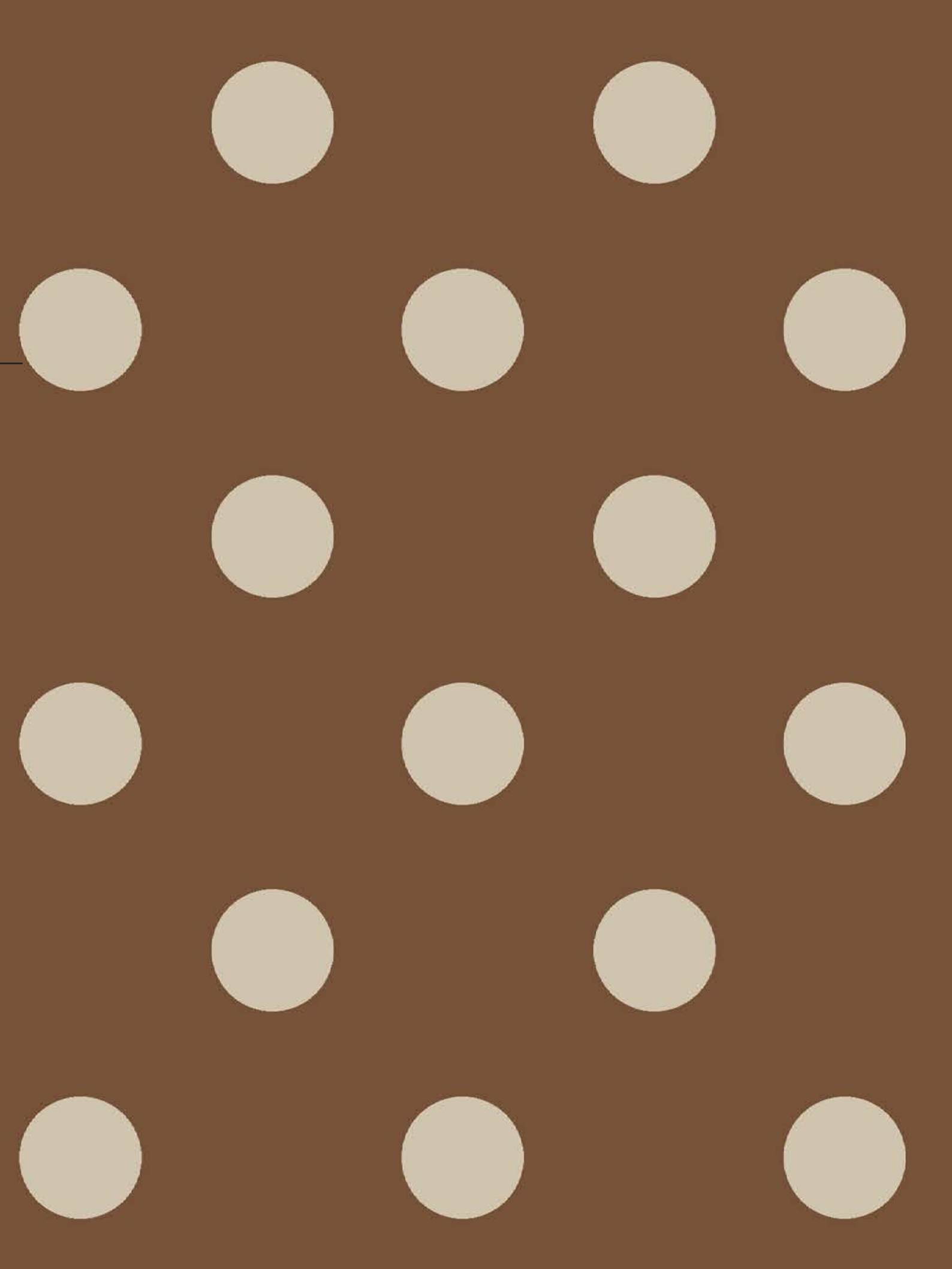
Our print



Own inhouse design

< ***DOTTED JERSEY***

Polka dots..... A Noa Noa evergreen,
a classic that still has its merits.
Recognizable and repeated.



NOA
40 years of
NOA

Our heritage of polka dots and coffee bean prints are well known and often a print theme in a Noa Noa collection. Polka dots continuing to offer a great base for creativity. We proudly present a polka dot program in our AW 21 collection to celebrate our dot heritage. The looks are utterly feminine #prettywomen.



DOTTED MOSS – 1-10692-1

Blouse, Long sleeve
50% viscose (Eco Vero), 50% viscose
Size: 32 - 46



DOTTED MOSS – 1-10693-1

Skirt, 3/4 length
50% viscose (Eco Vero), 50% viscose
Size: 32 - 46



DOTTED MOSS – 1-10691-1

Dress long sleeve, 3/4 length
50% viscose (Eco Vero), 50% viscose
Size: 32 - 46

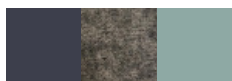


ESSENTIAL MELANGE MOHAIR



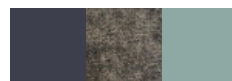
ESSENTIAL MELANGE MOHAIR – 1-9647-5

Pullover, Long sleeve
38% mohair, 32% acrylic, 30% polyamide
Size: XXS - XXL



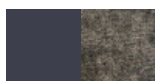
ESSENTIAL MELANGE MOHAIR – 1-8849-5

Cardigan, Long sleeve
38% mohair, 32% acrylic, 30% polyamide
Size: XXS - XXL



ESSENTIAL MELANGE MOHAIR – 1-10704-1

Dress long sleeve, Above knee
38% mohair, 32% acrylic, 30% polyamide
Size: XXS - XXL



1.3 AUTUMN/WINTER 2021



DOTTED JERSEY – 1-10739-1

Blouse, Long sleeve
95% viscose, 5% elastane
Size: XXS - XXL



NAPPA LEATHER – 1-10711-1

Skirt, 3/4 length
100% leather
Size: 32 - 46



AUTUMN TWEED



AUTUMN TWEED – 1-10708-1

Jacket, Long sleeve
70% polyester, 30% wool
Size: 32 - 46



AUTUMN TWEED – 1-10709-1

Trousers, Long
70% polyester, 30% wool
Size: 32 - 46



AUTUMN TWEED – 1-10710-1

Skirt, Below knee
70% polyester, 30% wool
Size: 32 - 46



COMFORT ALPACA



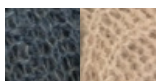
COMFORT ALPACA – 1-10848-1

Pullover, Long sleeve
44% alpaca, 31% polyamide, 15% wool, 10% viscose
Size: S - L



COMFORT ALPACA – 1-10296-2

Pullover, Long sleeve
44% alpaca, 31% polyamide, 15% wool, 10% viscose
Size: S - L



COMFORT ALPACA – 1-10295-2

Cardigan, Long sleeve
44% alpaca, 31% polyamide, 15% wool, 10% viscose
Size: S - L



1.3 AUTUMN/WINTER 2021



ESSENTIAL STRETCH VELVET – 1-6996-6

Trousers, Long
98% cotton, 2% elastane
Size: 32 - 46



ESSENTIAL WINTER MOHAIR – 1-10707-1

Vest
38% mohair, 32% acrylic, 30% polyamide
Size: XXS - XXL



ESSENTIAL WINTER MOHAIR



ESSENTIAL WINTER MOHAIR – 1-10021-2

Pullover, Long sleeve
38% mohair, 32% acrylic, 30% polyamide
Size: XXS - XXL



ESSENTIAL WINTER MOHAIR – 1-10020-2

Pullover, Long sleeve
38% mohair, 32% acrylic, 30% polyamide
Size: XXS - XXL



ESSENTIAL WINTER MOHAIR – 1-10706-1

Cardigan, Long sleeve
38% mohair, 32% acrylic, 30% polyamide
Size: XXS - XXL



ESSENTIAL WINTER MOHAIR – 1-10426-2

Various, Collar
38% mohair, 32% acrylic, 30% polyamide
Size: XXS - XXL



1.3 AUTUMN/WINTER 2021



WINTER COMFORT – 1-10732-1

Light outerwear, Long sleeve
60% polyester, 40% polyamide
Size: 32 - 46



DOWN – 1-10274-3

Heavy outerwear, Long sleeve
60% polyester, 40% polyamide
Size: 32 - 46



LONG DOWN – 1-9977-3

Various, Collar
100% polyester
Size: 32 - 46



R E P E T I T I O N

practice

prepare

strengthen

refine

repeat

NOA[®]
NOA