

CRIME LONDON

BRAND PROFILE



ABOUT

The twinning duo, Lisa and Jessica Kistermann have been building their footprint in sneakerwear since a young age.

During their studies in London the young sisters realized that there weren't many premium high-quality sneakers for a reasonable price. Recognising both a challenge and an opportunity - Crime London was born. A sneaker that would bridge the gap between street-wear and high-end fashion.

Established in 2012, their footwear label has become a unique celeb-favorite, enjoying immense success. Seen on stars like Alessandra Ambrosio, Sofia Richie and Nicky Jam.

The collections consist of a variety of unique and contemporary models. All products are handmade with great care in Indonesia, the Island of the Gods, using only finest Italian materials. Always ensuring the highest quality and original designs, although maintain affordable prices.

Staying true to their roots they also love to travel and connect with people accross culture and language. As they bring their passions and inspirations to more and more places, Crime London is designed to become more that a sneaker brand only - blending culture into design. Creativity into spaces. This is what keeps them inspired while developing their collections.

RETAILS

Crime London is currently featured in several international department stores and boutiques:

- **El Corte Inglés**, Spain
- **Rinascente**, Italy
- **Isetan**, Japan
- **Hankyu**, Japan
- **Helen Marlen**, Kiev
- **ABC**, Lebanon

and more than 1000 other multi-brand stores!

Next up for launch - Scandinavia...

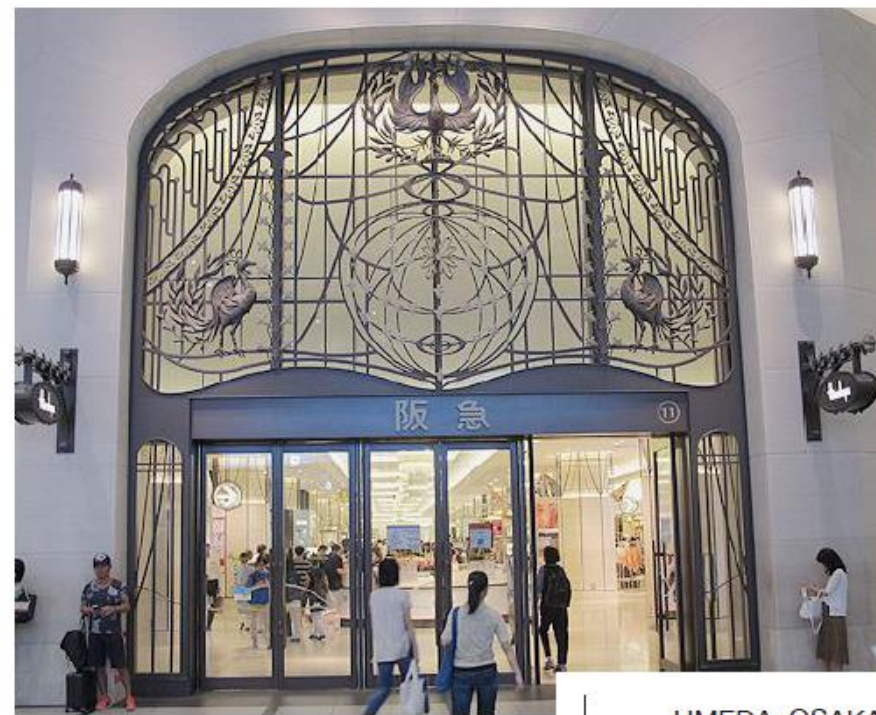


CRIME LONDON

POP UP STORE



SHINJUKU, TOKYO
ISETAN



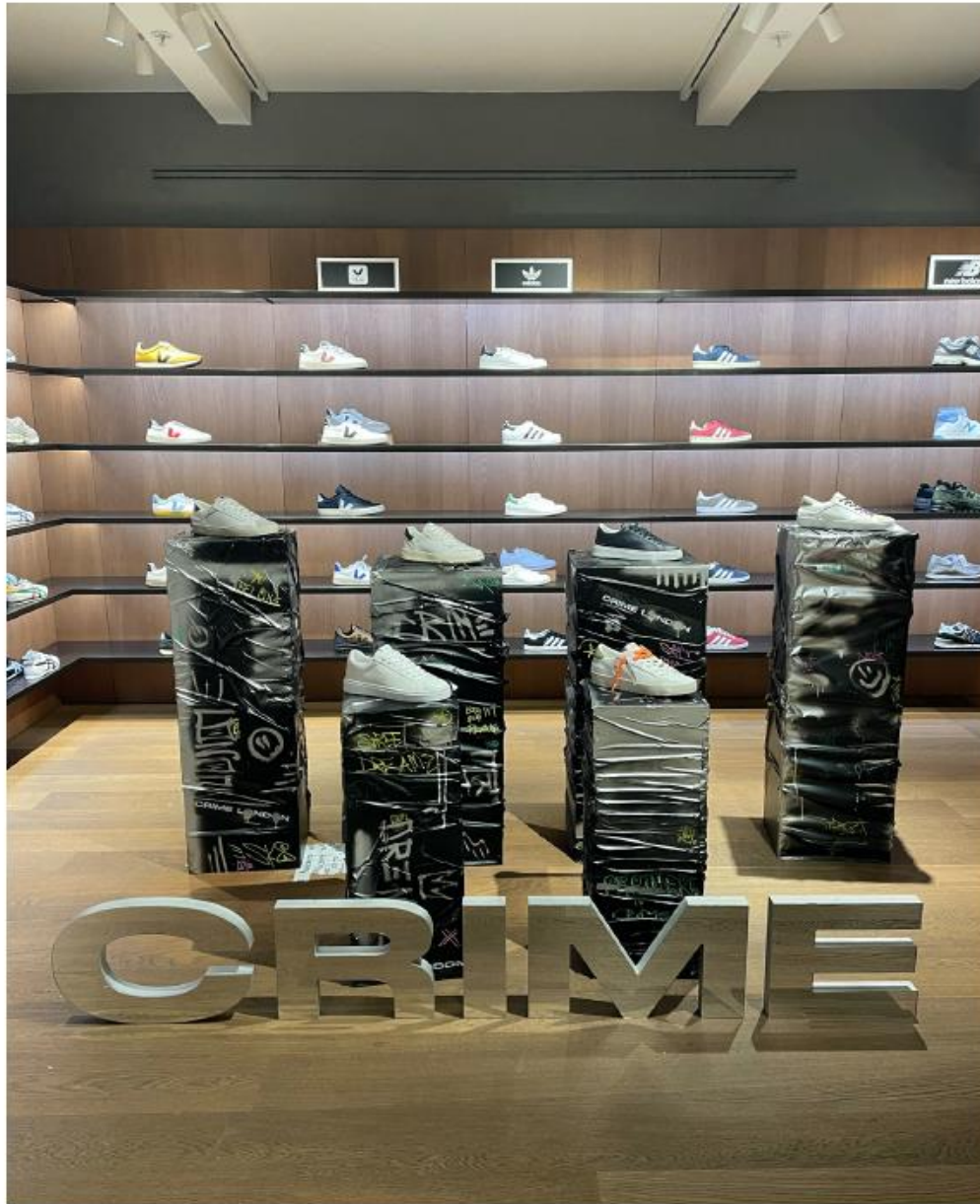
UMEDA, OSAKA
HANKYU



HANKYU | UMEDA, OSAKA

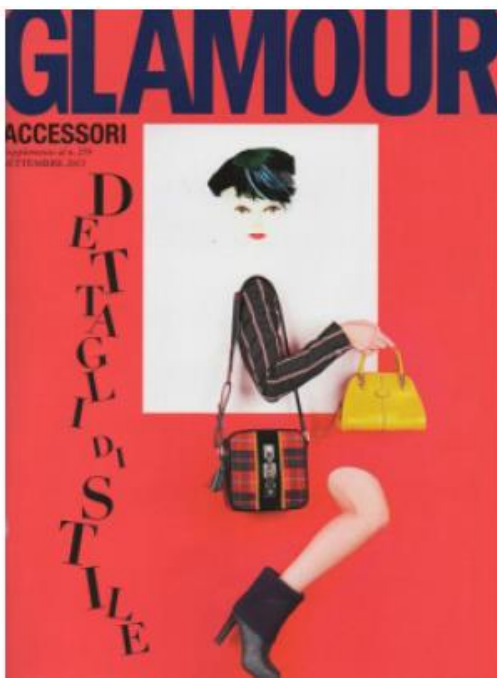


RINASCENTE | FLORENCE



CRIME LONDON

PRESS COVERAGE CLIPPINGS



CRIME LONDON

Retail inquiries from Sweden / Denmark / Norway

Please contact

Andreas Crona

Creative Sales

andreas@creative-sales.se

+46 72 33 22 114

www.creative-sales.se