

A woman with long, wavy blonde hair is standing outdoors in front of a large, green-patina statue. She is wearing a light blue suit consisting of a blazer and trousers, over a white, textured, square-neck top. The scene is brightly lit, suggesting a sunny day. The statue behind her is a large, classical-style figure, possibly a woman, with flowing drapery. The woman is leaning slightly against a stone ledge.

MAIN SPRING 2023

LOOKBOOK

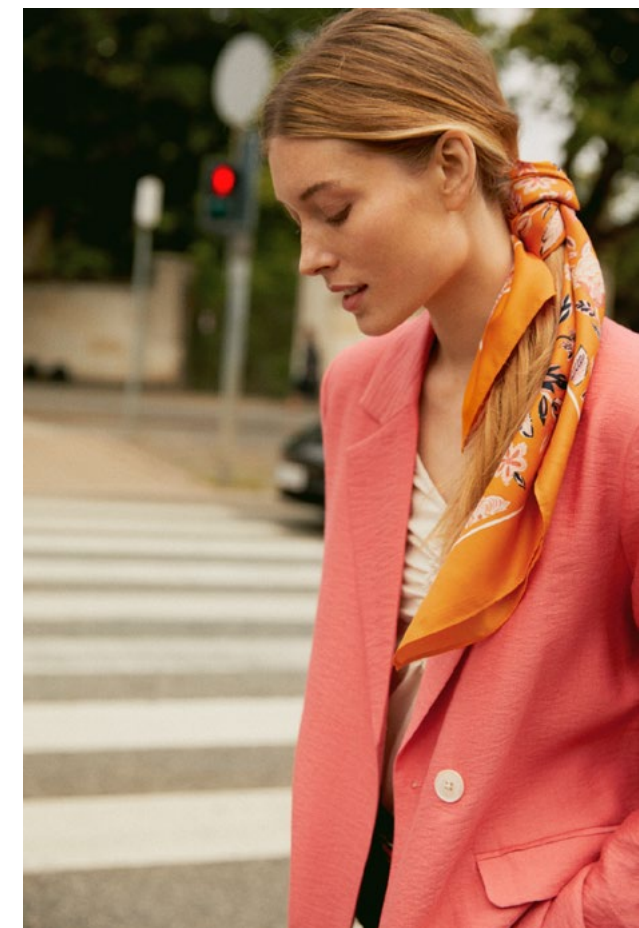
PART TWO

EST. COPENHAGEN 1986

VIBRANT SPRING

It's time to celebrate the colourful beginning of a new season. With a vital, energetic colour palette, our Main Spring 2023 collection blooms with floral fantasies and mood-boosting, spring vibes.

Our dreamy, versatile dresses are equally perfect as everyday wear or for festive occasions. You will also discover prints that ooze optimism with instant impact. Easy pairings, delightful denim, frilly, feminine details, and continuously cool, classic tailoring that can be worn season after season.





30307612 SMILLAPW DRESS
30307144 RASTINAPW CARDIGAN
30307523 SAMIRAPW DRESS



30306622 NAVAPW SHIRT



30307524 SHIRAPW DRESS



30307507 SOLPW DRESS



30307497 RONNIEPW BLAZER
30307588 STEVIEPW TOP
30306618 NADJAPW PANTS



30307517 SADIAPW SHIRT
30307518 SAVANNAPW SHIRT



30307565 SARINAPW SHIRT
30307567 TIARASPW PANTS



30307540 SERAPW CARDIGAN
30306770 CURLIESPW T-SHIRT
30307495 OLENAPW SKIRT



30307535 SONYAPW DRESS



30307569 SABELLAPW SHIRT



30307426 VENDELAPW DRESS
30307494 SANNEPW JACKET



30307519 SABRINPW SHIRT
30306618 NADJAPW PANTS



30307518 SAVANNAPW SHIRT
30307384 RAYNEPW JEANS



30307557 SILAPW DRESS



30307539 SAYAPW PULLOVER



30307545 SABINEPW PULLOVER
30307384 RAYNEPW JEANS



30307519 SABRINPW SHIRT
30307464 SADIKAPW SUNGLASSES



30304403 SHIRLEYPW SUNGLASSES
30307466 SAIDAPW SUNGLASSES
30306716 NARIANPW SUNGLASSES
30307464 SADIKAPW SUNGLASSES



30307508 SISSEPW DRESS



30307501 SIAPW JACKET
30307530 SIRINEPW T-SHIRT
30307499 SALINAPW PANTS



30307544 SIARAPW PULLOVER
30307550 SIYAPW SKIRT



30307524 SHIRAPW DRESS



30307556 SIABELLAPW JUMPSUIT



30307542 SHEAPW PULLOVER
30307549 JUDYPW JEANS





30307552 NYANPW JACKET
30306622 NAVAPW SHIRT
30307724 NINNESPW PANTS



30307563 SEFINAPW BLOUSE
30307736 BARBAPW JEANS



30307552 NYANPW JACKET
30306622 NAVAPW SHIRT
30307724 NINNESPW PANTS



30307551 RUTHIEPW DRESS



30306622 NAVAPW SHIRT
30307555 SHENAPW PANTS



30307749 SONJASPW BLAZER
30307532 NEMIASPW T-SHIRT
30307736 BARBAPW JEANS



30307545 SABINEPW PULLOVER
30305570 SOFFYSPW PANTS



30307566 SARISAPW DRESS



30307570 SANIYAPW SHIRT
30307549 JUDYPW JEANS
30307589 SABBIEPW DRESS



30307570 SANIYAPW SHIRT



30307572 SARITAPW DRESS



30307575 SEBINAPW DRESS



30307561 SELENAPW DRESS



30306770 CURLIESPW T-SHIRT
30307592 SABRINEPW SKIRT



30307609 SALIPW DRESS



30307588 STEVIEPW TOP
30307581 SIBILLAPW PANTS



30307558 SINNAPW BLOUSE



30307564 SADEPW DRESS



30307617 SELIMAPW SCARF
30307580 TALENAPW BLAZER
30307574 SELINAPW T-SHIRT

30307198 RADIAPW BELT
30307491 SIMONAPW JEANS



30307508 SISSEPW DRESS



30307518 SAVANNAPW SHIRT



30307602 SEIAPW DRESS



30307560 STINNAPW SHIRT
30307549 JUDYPW JEANS



30307609 SALIPW DRESS



30307517 SADIAPW SHIRT
30307553 SHEBAPW SKIRT



30307728 RIKKEPW WAISTCOAT
30307581 SIBILLAPW PANTS



30307565 SARINAPW SHIRT
30307567 TIARASPW PANTS



30307576 SACHAPW PULLOVER
30307549 JUDYPW JEANS



30307582 SINEPW BLAZER
30307583 NINNESPW PANTS





WE CARE

*our preferred fiber overview
- responsibly sourced*

*The styles in our collections, produced with a sustainable focus,
are labelled with our WE CARE tag both on-products and on-line.*



BCI COTTON

The Better Cotton Initiative (BCI) is the world's largest cotton sustainability programme which strives to improve the working conditions and environmental impact of global cotton production. Read more: <https://bettercotton.org/>



ORGANIC COTTON

Organic cotton is produced and certified to organic agricultural standards, without the use of toxic pesticides and fertilizers or genetically modified organisms that damage the soil, ecosystems and humans.



TENCEL™ LYOCCELL

LENZING™ TENCEL™ Lyocell fibres are made using wood pulp from sustainably managed forests in a closed-loop process where water and chemicals are reused. Read more: <https://www.lenzing.com/>



TENCEL™ MODAL

LENZING™ TENCEL™ Modal fibres are made using wood pulp from sustainably managed forests, This generates less wastewater and reuses chemicals to a higher extent than conventional modal. Read more: <https://www.lenzing.com/>



LENZING™ ECOVERO™

LENZING™ ECOVERO™ fibres come from sustainably managed forests, produce less CO2 emissions and have less water impact compared to conventional viscose, as the water and chemicals are reused. Read more: <https://www.lenzing.com/>



LYOCELL

Lyocell is made using wood pulp from fast-growing, irrigation-free eucalyptus trees. The fiber is produced in a closed-loop process where water and chemicals are reused.



FSC™ VISCOSE

FSC™ Viscose is made using wood pulp from sustainably managed forests. FSC is a global NGO taking measures to restrict hazardous pesticides, prohibit deforestation & ensure a more transparent supply chain.
Read more: <https://www.fsc.org>



RECYCLED POLYESTER

Recycled polyester saves water, energy and produces less CO2 emissions, compared to conventional polyester.



RECYCLED POLYAMIDE

Recycled polyamide reduces water, energy and produces less CO2 emissions, compared to conventional polyamide.



LEATHER WORKING GROUP

Leather Working Group is an international, non-profit organization aiming to improve the environmental impact of the leather industry by assessing and certifying leather manufacturers.



RESPONSIBLY SOURCED WOOL

Wool is sourced from animal welfare-certified farms.



RESPONSIBLY SOURCED MOHAIR

Mohair is sourced from animal welfare-certified farms.



DOWN FROM ANIMAL WELFARE-CERTIFIED FARMS

Down is sourced from animal welfare-certified farms.

PART TWO

EST.COPENHAGEN 1986



Click here to read about our more responsibly sourced fibres
<https://www.parttwo.com/en-eu/we-care>