

MAIN AUTUMN 2021



PART TWO

EST. COPENHAGEN 1986



# Nordic Nature

A new season ahead means looking into new perspectives. More than ever we see a new appreciation of nature and the desire for both comfort and longevity.

Nature sets the mood for our Main Autumn 2021 collection, which is clearly stated in the core neutral colour palette derived from the sea & the sky, and the rich earthy & green tones drawn from the forest.

The feminine touch of delicate embroidery and elegant silhouettes induce the fashionable comfort. The versatile and eye-catching knitwear calls for new beginnings and features a soft focus for cozy autumn wardrobe staples.

PART TWO

EST. COPENHAGEN 1986



*KoolioPW Scarf 30306487*

*KatanaPW Pullover 30306310*

*KadlaPW Pants 30306326*



*EleinaPW Dress 30306212*



*KajePW Pullover 30306304  
KetstaPW Jacket 30306274  
KavinPW Pants 30306275*



*EverlottePW Pullover 30305571  
KessiaPW Dress 30306237*



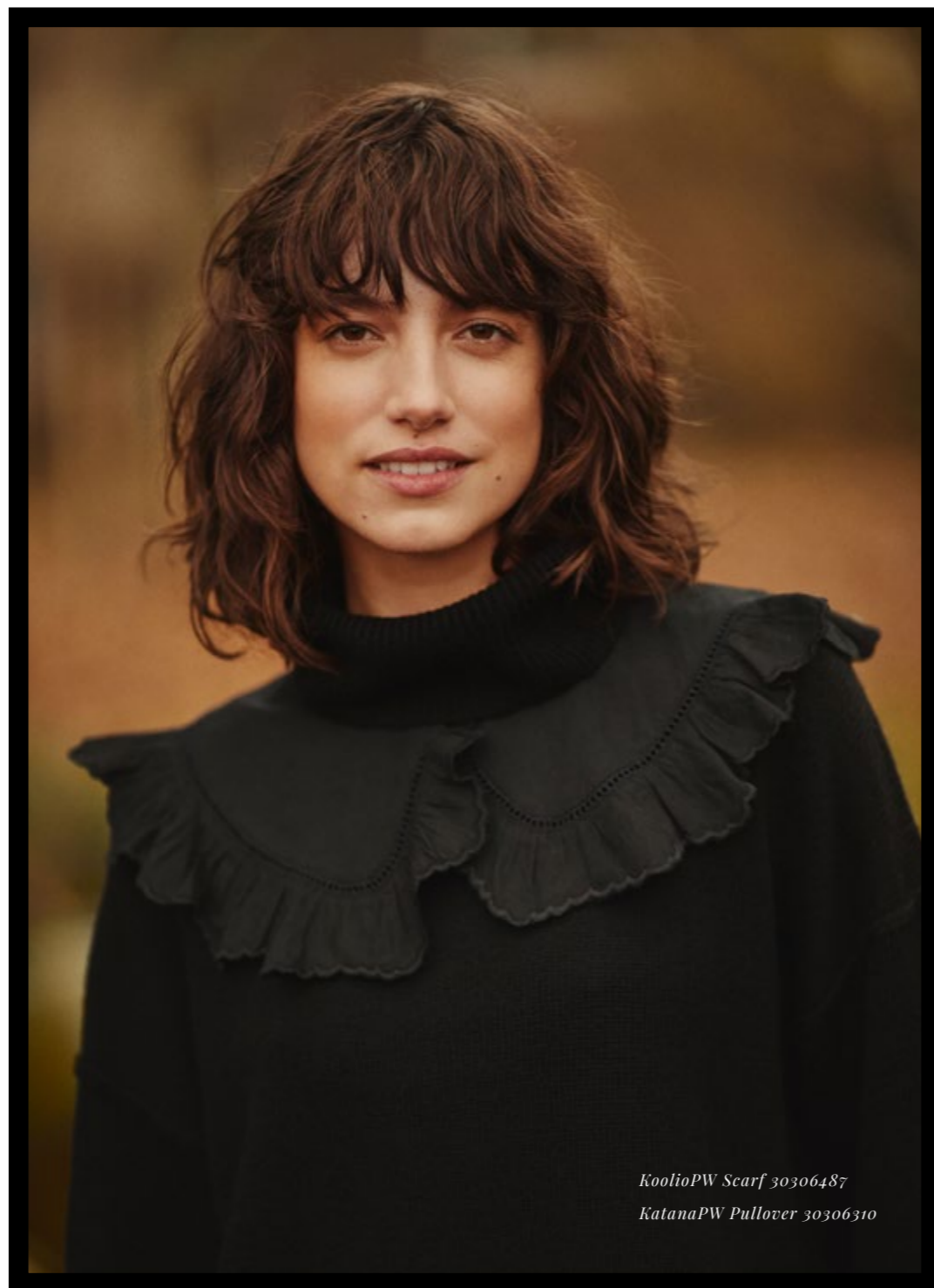
*KeeraPW Blouse 30306235  
JudyPW Jeans 30306362*



*KatchaPW Dress 30306284*  
*KrisPW Cardigan 30306311*  
*KjerstenPW Pants 30306270*



*HevinPW Pullover 30305877*  
*EwandaPW Pants 30305816*  
*KristiePW Jacket 30306271*





*KassiePW Shirt 30306221*  
*EsrasPW Jeans 30306273*



*KassiasPW Shirt 30306479*  
*KirsePW Pants 30306216*





*KirstinaPW Dress 30306368*



*EyvorPW Dress 30306213*



*KarolinaPW Pullover 30306308*



# PART TWO

EST. COPENHAGEN 1986



*KanvaPW Pullover 30306342*

*EwandaPW Pants 30305816*

*KamilePW Pullover 30306303*

*EstrasPW Jeans 30306273*



*KistaPW Pullover 30306262*  
*KaltiaPW Dress 30306334*



*KristianePW Poncho 30306314*



*KeishaPW Dress 30306244*



*KathlinPW Pullover 30306254  
ElfaPW Jacket 30306214  
KatyaPW Pants 30306255*



*TordisPW Pullover 30304820*

*KadiaPW Dress 30306223*



*HerdisPW Shirt 30306218*  
*IngaPW Skirt 30306282*



*TordisPW Pullover 30304820 (?)*  
*EleinaPW Dress 30306279*





# PART TWO

EST. COPENHAGEN 1986



*KiljaPW Shirt 30306234*



*KatarinPW Shirt 30306236*  
*KirstiPW Pants 30306296*



*KathePW Jacket 30306278*  
*RatanPW T-Shirt 30305505*  
*HindPW Pans 30306381*



*KethiaPW Dress 30306269*



*KenziPW Sweatshirt 30306478*  
*EwandaPW Pants 30305816*



*KinePW Dress 30306232*  
*KanvaPW Pullover 30306342*



*KaleyPW Blouse 30306231*



*KanaaPW Pullover 30306342*  
*KarinlisePW PU 30306344*



*KamilePW Pullover 30306303*



*KebiePW Shirt 30306336*  
*KanaePW Cardigan 30306343*



*KlenniePW Shirt 30306239*  
*KatalinaPW Pullover 30306346*  
*JudyPW Jeans 30306362*

**DENMARK**

DK Company/Part Two  
Emil Krainer  
Kanonbådsvej 10  
1437 Copenhagen K  
emkr@dkcompany.com  
0045 27518080

DK Company/Part Two  
Christina Maja Johnsen  
La Cours vej 6  
7430 Ikast  
cmj@dkcompany.com  
0045 41904782

**NORWAY**

Jelly B Agenturer A/S  
Part Two Norge ved Kristin Fjellstad  
Maridalsveien 87 B  
PD. 4495 Nydalen  
0403 Oslo  
kristin@jellyb.no  
0047 90772384

**SWEDEN**

DK Company Sweden AB/Part Two  
Therese Nelson Nordin  
Augustendalsvägen 7  
13152 Nacka Strand  
thnn@dkcompany.com  
0046 702950381

DK Company Sweden AB/Part Two  
Marie Svensson  
Beatrice Lessliesgatan 12,  
42142 Västra Frölunda  
masv@dkcompany.com  
0046 (0) 703415271

**FINLAND**

DK Company Finland OY/Part Two  
Janina Leppänen  
Katajajarjuntie 11  
00200 Helsinki  
jale@dkcompany.com  
00358 405192727

**BELGIUM**

Bieke Delepine  
Van de Wervestraat 20  
2060 Antwerpen  
bide@dkcompany.com  
0032 475755632

**THE NETHERLANDS**

Bodewes Fashion  
Energiestraat 9  
1411AN Naarden  
info@bodewes.nl  
0031 352400207

**UNITED KINGDOM**

TOG Clothing (UK) Ltd./ Part Two  
Maria Travers & Kathryn Froud  
Unit 12  
Coda Studios  
189 Munster Road  
London  
SW6 6AW  
matr@dkcompany.com  
0044 7949884757  
kafr@dkcompany.com  
0044 7852205880

**IRELAND**

Inson/Part Two  
Avril Robinson  
Lavender Cottage,  
48 Mountstewart Road  
BT222AX Newtownard  
avril@inson.co.uk  
0044 7771702419

Inson/Part Two  
Avril Robinson  
No. 1, The Grainstore at Distillery Lofts  
Distillery Road  
Dublin 3  
avril@inson.co.uk  
0044 7771702419

**GERMANY**

humanity1976 GmbH  
Alexander Abraham  
Heinrich-Hertz Str. 3a  
14532 Kleinmachow  
alexander@humanity1976.com  
0049 162 988 2858

humanity 1976 GmbH  
Alexander Abraham  
Heinrich-Kley-Str.12  
80807 München  
alexander@humanity1976.com  
0049 162 988 2858

humanity 1976 GmbH  
Julia Crämer  
Sankt Annenufer 3  
20457 Hamburg  
julia@humanity1976.com  
0049 (0) 15751651583

humanity 1976 GmbH  
Tessa Knoll  
Kölner Straße 17a  
40211 Düsseldorf  
tessa@humanity1976.com  
0049 1739197934

**SPAIN**

PEPPER BRANDS S.L.  
Gemma Rodeja  
Alba Rosa 35, (poligono. ind. Les mates)  
17800 OLOT (Girona)  
gemmarodeja@pepperbrands.es  
yolandaf@pepperbrands.es  
0034 638983234

**USA**

BRIDGE SHOWROOM  
Tanya Gabrielyan & Ken Nachbar  
530 7th Ave., Jlr M1  
New York, NY 10018  
sales@bridgeshowroom.com  
+1 (646) 828-1234

**CANADA**

DK Company Canada INC  
Émilie Richard  
265 Boulevard Lebeau  
Ville St. Laurent  
H4N3H8 Quebec  
eri@dkcompany.com  
001 5143341265 ext 274

DK Company Canada INC  
Robyn Jones  
Toronto Office  
230-2770 Dufferin St.  
Toronto, M6B 3R7  
Ontario  
robj@dkcompany.com  
001 4164340963

DK Company Canada INC  
SUSAN COOPER AGENCY F.E.B  
239-1951 Glen Drive  
V6A4J6 Vancouver  
susan.gallacher@telus.net  
001 6047093279

**RUSSIA**

S.A.D.I. fashion Agency  
BC Grand Setun Plaza  
Gorbunova 2 office A320  
121596 Moscow  
Svetlana Abdullaeva  
ceo@sadi-fashion.com  
0079 263602379

**EXPORT**

Export Manager  
Emil Krainer  
Kanonbådsvej 10  
1437 Copenhagen K  
emkr@dkcompany.com  
0045 27518080

**HEAD OFFICE**

Brand Director  
Thomas Juul  
International Sales Coordinator  
Pernille Kruse Møller  
Kanonbådsvej 10  
1437 Copenhagen K  
thju@dkcompany.com  
0045 29741683  
pru@dkcompany.com  
0045 40465544



KayaPW Hat 30306382  
KitaPW Scarf 30306385  
KecitaPW Scarf 30306396

PHOTOGRAPHER: HÖRDUR INGASSON  
MODELLER: MARION PASCALE / ELITE MODELS, KATHIE LAM / PROMOD  
HAIR & MAKEUP: LASSE PEDERSEN / AGENTUR CPH, EMELIE PRESKOU  
PRINT: VAHLE+NIKOLAISENSEN





# PART TWO

EST. COPENHAGEN 1986