



spring 2023

 PEPPERHOLM





From Malmö with love

Pepperholm art prints are printed using a high-quality digital process often called giclée. It's the same process used by many artists to make limited-edition prints and it takes a little longer than regular offset printing. Our prints are printed just down the street from our office in Malmö and hand-trimmed. Then they're individually inspected, rolled up and packaged by hand. By taking our time and keeping things local we can be sure we're making the best prints possible.

Our new tapestries are also printed and sewn in Sweden. They're printed on 100% linen using a similar digital method and fitted on aluminium hangers with a leather band for hanging.

All of our designs are selected with homes and rooms in mind. The range of accent colors and muted, natural tones are chosen to harmonize with modern home decor. We select our prints from diverse sources but they all have one thing in common: that stylishly cozy Pepperholm feel.



Tapestries

There's something special about fabric. A tapestry brings warmth to a room and makes it feel calmer – not just visually but acoustically as well. We've chosen some of our favorite designs to print on 100% linen. They come with aluminium hangers and a leather band so you can hang them directly out of the tube. All you need is a nail.



Trillium

45 x 65 103-0063-4565-00
70 x 100 103-0063-7000-00



Beef begonia

45 x 65 103-0016-4565-00
70 x 100 103-0016-7000-00



Green hills

45 x 65 103-0003-4565-00
70 x 100 103-0003-7000-00



Chestnut leaves

45 x 65 103-0018-4565-00
70 x 100 103-0018-7000-00



Autumn at Oirase

45 x 65 103-0071-4565-00
70 x 100 103-0071-7000-00



Blue pond

45 x 65 103-0002-4565-00
70 x 100 103-0002-7000-00



Moon at Magome
45 x 65 103-0067-4565-00
70 x 100 103-0067-7000-00



Japanese prints

Something about Japanese art harmonizes well with Scandinavian homes. Maybe it's the shared aesthetic of simplicity and balance or the love of the graceful forms found in nature. We've found so many Japanese prints that we love that they've become a huge part of our collection of art prints. The original artworks were printed using blocks of wood, a traditional Japanese technique that gives these prints a rich texture and organic feel. We've selected works by respected Japanese artists such as Sekka Kamisaka, Hasui Kawase and Shōtei Watanabe.

Fuji

70 x 50	101-0005-7050-00
100 x 70	101-0005-0070-00
150 x 100	103-0005-5000-00



Cranes and pines

70x50 101-0062-7050-00
100x70 101-0062-0070-00



Chrysanthemums

70x50 101-0014-7050-00
100x70 101-0014-0070-00



Nine crows

70x50 101-0088-7050-00
100x70 101-0088-0070-00



Moon and grass

70x50 101-0061-7050-00
100x70 101-0061-0070-00



Bamboo and snow

70x50 101-0012-7050-00
100x70 101-0012-0070-00



Flowers and hills

70x50 101-0068-7050-00
100x70 101-0068-0070-00



Autumn at Oirase

50x70 101-0071-5070-00
70x100 101-0071-7000-00



Rain at Maekawa

50x70 101-0065-7050-00
70x100 101-0065-7000-00



Moon at Magome

50x70 101-0067-5070-00
70x100 101-0067-7000-00



Morning at Beppu

50x70 101-0070-5070-00
70x100 101-0070-7000-00



Blue pond

50x70 101-0002-5070-00
70x100 101-0002-7000-00



Green hills

50x70 101-0003-5070-00
70x100 101-0003-7000-00



Pink sky

50x70 101-0004-5070-00
70x100 101-0004-7000-00



Gray cranes

70 x 50 101-0001-7050-00
100 x 70 101-0001-0070-00



Reflection

70 x 50 101-0080-7050-00
100 x 70 101-0080-0070-00



Landscape with stars

70 x 50 101-0006-7050-00
100 x 70 101-0006-0070-00



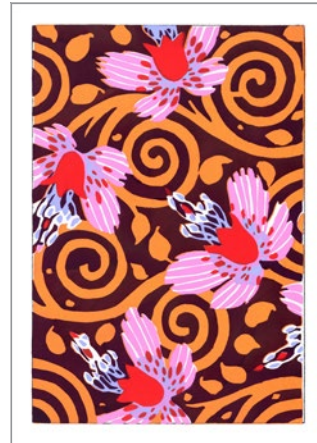
Chestnut leaves

50 x 70 101-0018-5070-00
70 x 100 101-0018-7000-00



Yellow floral

50 x 70 101-0089-5070-00



Orange spirals

50 x 70 101-0091-5070-00



Chromatic diamond

50 x 70 101-0069-5070-00
70 x 100 101-0069-7000-00



Trillium

30 x 40 101-0063-3040-00



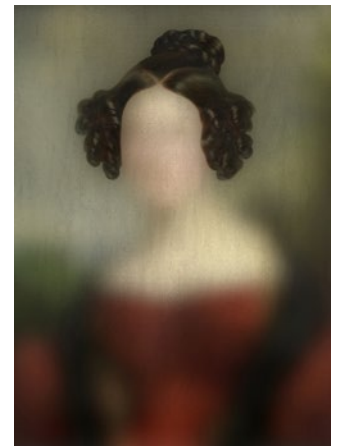
Beef begonia

30 x 40 101-0016-3040-00



Emma

50 x 70 101-0038-5070-00
70 x 100 101-0038-7000-00



Catharina

50 x 70 101-0027-5070-00



La grande baigneuse

30 x 40 101-0013-3040-00



En premiär

30 x 40 101-0037-3040-00



Storm

30 x 40 101-0058-3040-00



Green lotus
50x70 101-0090-5070-00

Art prints

All of our prints are printed on fine art paper – 210g Hahnemühle studio matte paper to be specific. Hahnemühle has been producing art paper since 1584 and has a quality that you recognize immediately when you see – and feel – our prints. We print using a 12-color giclée process which gives Pepperholm prints rich vivid colors with deep blacks. And the Japanese inks that we use are water-based which makes them more environmentally friendly than many other inks.

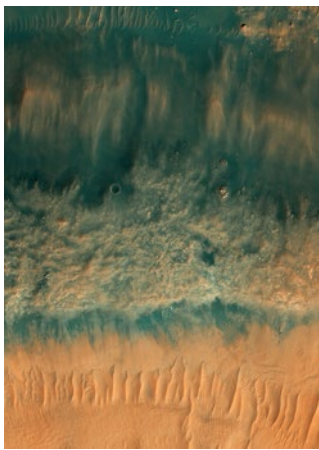


Labyrinth dunes

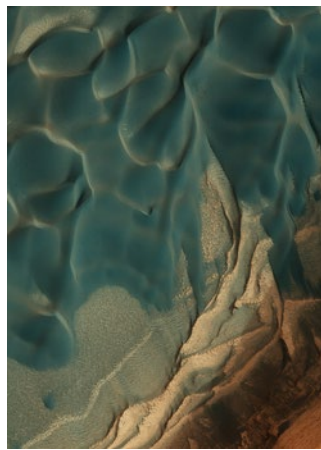
50 x 70 101-0076-5070-00

70 x 100 101-0076-7000-00

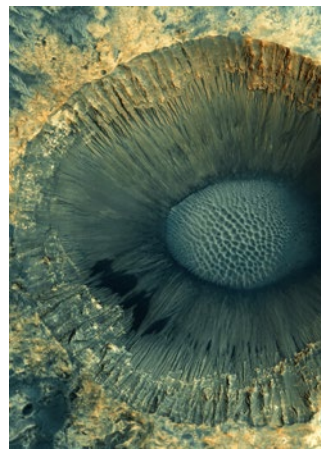
100 x 150 101-0076-0050-00



Dunes at Kaiser crater
 50x70 101-0079-5070-00
 70x100 101-0079-7000-00



Indigo dunes
 50x70 101-0078-5070-00
 70x100 101-0078-7000-00



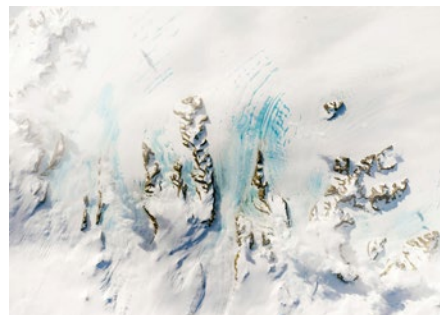
Meridian crater
 50x70 101-0077-5070-00
 70x100 101-0077-7000-00



Photographie lunaire
 50x70 101-0010-5070-00
 70x100 101-0010-7000-00



Bottenviken
 70x50 101-0087-7050-00
 100x70 101-0087-5000-00



Antarctic ridge
 70x50 101-0086-7050-00
 100x70 101-0086-0070-00



Venus
 50x50 101-0008-5050-00



Mars
 50x50 101-0081-5050-00

The view from above

We love the soft textures etched into the massive geological forms that you see in satellite photos. They're both calming and endlessly fascinating and they harmonize well with the natural materials that we use in our homes. Our Views of Mars series of art prints depicts photos taken from 100km above the surface of Mars and our satellite photos of Bottenviken and Antarctica show icy landscapes here on Earth. *Photographie lunaire* is one of the earliest telescopic photos of the Moon – taken in 1896 and our art prints of Venus and Mars look fantastic as a pair.



pepperholm.com
Västergatan 8, Malmö

