

S/S 27 collection.

A way of living.



Tenson®

EST. 1951





A way of living.

For decades, Tenson has been shaped by weather, movement and everyday life. Function and quality have always been at the core of what we do. Our products are made to perform, to last and to feel right when worn.

Over time, the way our products are used has evolved. They are worn in the city as much as beyond it, chosen for their comfort, fit and contemporary expression as much as for their technical performance. This is where Tenson lives today. In the space where function meets everyday life.

With SS27, we continue to refine that balance. Informed by contemporary trends, but guided by purpose, performance and longevity. A design language that feels relevant, wearable and modern.

Tenson products are built to move with you through shifting conditions and changing days. Designed for city life, shaped by weather and ready for moments that go beyond the expected. Pieces that work together across categories, making it easy to build a complete look without compromising on function or comfort.

This is not about choosing between lifestyle and performance. It is about bringing them together in a way that feels natural and honest.

SS27 reflects our belief that good design should support how people actually live. A way of living defined by movement, versatility and everyday use. Clothing made to be worn often, relied on and lived in.

Men	6
Women	38
SSP Collection	74
Technologies	84

Modern function meets fashion ease.

For SS27, Tenson presents a lifestyle-driven collection where modern function meets a more relaxed, fashion-led ease. The assortment is built as a complete wardrobe, designed for everyday city life, light movement and changing weather conditions.

This season introduces a more expressive silhouette with updated, modern fits and softer movement throughout the collection. Outerwear features contemporary proportions, while softgoods add fluidity and comfort, making it easy to build cohesive head-to-toe looks across categories.

The colour story leans into muted sophistication. Deep greys and warm neutrals form a grounded base, complemented by soft lilac tones and a luminous blue that brings light and contrast to the palette.

Materials play a central role in defining the collection. Lightweight technical fabrics are balanced with soft textures and layer-friendly constructions, offering comfort, protection and versatility throughout the day.

SS27 is designed for real use. A collection shaped by everyday routines, urban movement and the unpredictability of weather. Practical, but elevated. Contemporary, yet easy to wear.

Hikari - Shaped by light.

Hikari is the guiding concept of SS27. Named after the Japanese word for light, it reflects ideas of clarity, renewal and moving toward a brighter season. Longer days, softer light and a sense of forward motion shape both mood and design.

Rooted in Japanese outdoor design, Hikari blends technical performance with a calm, modern silhouette. Function sits at the core, refined through precise details, contemporary fits and an understated confidence. The expression is light, versatile and purposeful.

Designed as part of Tenson's full-wardrobe approach, Hikari pieces move naturally between city life and open spaces. Women's styles take a slightly more fashion-forward direction with softer volume and refined details, while men's styles offer relaxed fits made for effortless layering and everyday use.





Women's collection.

SPRING / SUMMER 2027.



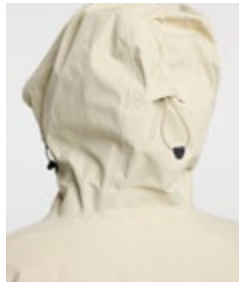
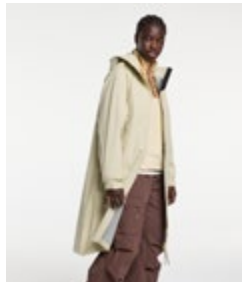
Hikari Femme Parka Women

ART.NO. 46018613

ABC

SEK **3000**
EUR **290**
DKK **2200**

Hikari Femme Parka Women is a functional and stylish parka designed for outdoor life in varying conditions. Built with MPC Extreme X and a waterproof level of WP 20000, it delivers the highest level of protection against wind and rain while maintaining comfort throughout the day. It features a fixed hood with both vertical and horizontal adjustment for a secure and comfortable fit, along with a folded chinguard for added comfort. Two zippered front pockets provide practical storage, while adjustable cuffs, Velcro-adjustable sleeve straps, and an adjustable hem allow you to customize the fit. A protective parka with a refined outdoor look, ready for demanding weather.



873 BROWN



705 SAND

FEATURES

- Adjustable hood both vertical and horizontal adjustment.
- Fixed hood.
- Folded chinguard.
- Two front pockets with zippers.
- Adjustable hem.
- Adjustable cuffs.
- Velcro-adjustable sleeve straps.

SHELL FABRIC 1

- MPC Extreme X
- 2.5 Layer
- Ripstop
- WP 20 000 mm
- MP 20 000 g/m2/24h
- PFC-free water repellent finish
- 100% Recycled Polyamide

SIZES

- XS-XXL



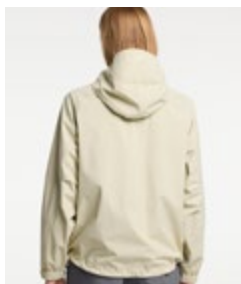
Hikari Femme Jacket Women

ART.NO. 46018612

ABC

SEK **2500**
EUR **240**
DKK **1900**

Hikari Femme Jacket Women is a clean and functional jacket designed for outdoor life with a refined look. Built with MPC Extreme X and a water-proof level of WP 20000, it delivers the highest level of protection against wind and rain while maintaining comfort and style in changing conditions. It features a fixed hood with both vertical and horizontal adjustment for a secure fit, along with two zippered front pockets for practical storage. Adjustable cuffs, Velcro-adjustable sleeve straps, and an adjustable hem allow for a personalized fit and added protection against the elements. A high-performance jacket that moves effortlessly between everyday wear and demanding weather.



873 BROWN

705 SAND

FEATURES

- Adjustable hood both vertical and horizontal adjustment.
- Fixed hood.
- Two front pockets with zippers.
- Velcro-adjustable sleeve straps.
- Adjustable cuffs.
- Adjustable hem.

SHELL FABRIC 1

- MPC Extreme X
- 2.5 Layer
- Ripstop
- WP 20 000 mm
- MP 20 000 g/m2/24h
- PFC-free water repellent finish
- 100% Recycled Polyamide

SIZES

- XS-XXL



Trench Nouveau Women

ART.NO. 465017830

ABC

SEK **4000**
EUR **390**
DKK **3000**

This is Tenson's contemporary take on the classic trench coat – the Trench Nouveau. The classic khaki trench coat is a timeless piece loved by men and women of all ages. The trench coat's functional design, with its roots in the First World War trenches (hence the name), has not really changed over the past century; but the time has come to change that and offer a new contemporary take.

Tenson's Trench Nouveau mixes a modern, simple and understated design with a classic silhouette, featuring the charm of a trench's wider lapel, storm flap and pockets, half-belted cuff with buttons etc. In terms of performance quality, Tenson's proprietary MPC Extreme technology (WP 10,000mm / MP 10,000 g/m²/24 h) with taped seams combine extremely effective waterproofing with exceptional breathability to keep you comfortable no matter the weather.



999 BLACK



711 SAND

FEATURES

- Belt in waist.
- Taped seams.
- Adjustable hood (vertical).
- Detachable hood.
- High collar.
- Inner pocket with zip.
- Two front pockets.
- Adjustable cuffs.
- Slits at the sides with zippers.
- Ventilation.

SHELL FABRIC 1

- MPC Extreme Shell
- 3 Layer stretch
- WP 10 000 mm
- MP 10 000 g/m²/24h
- PFC-free water repellent finish
- 50% Recycled Polyester
- 50% Polyester

SIZES

- XS-XL



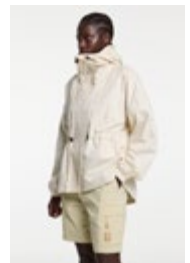
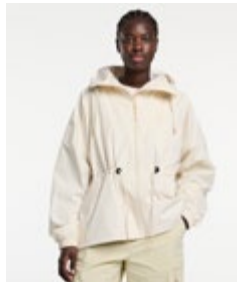
Flow Jacket Women

ART.NO. 46018603

ABC

SEK **1600**
EUR **160**
DKK **1200**

Flow Jacket Women is a lightweight and versatile jacket designed for outdoor use in changing weather conditions. Built with MPC Extreme and finished with a PFC-free water-repellent treatment, it offers reliable protection against wind and rain while maintaining breathability and comfort throughout the day. The fixed hood features both vertical and horizontal adjustment for a secure and personalized fit. A zippered chest pocket and two zippered front pockets provide practical storage, while elastic cuffs, an adjustable hem, and a drawstring waist allow you to shape the fit and keep the elements out. A functional jacket with a clean, feminine silhouette made to move effortlessly between everyday life and outdoor adventures.



873 BROWN

014 CREAM

FEATURES

- Fixed hood.
- Adjustable hood both vertical and horizontal adjustment.
- Two front pockets with zippers.
- Chest pocket with zipper.
- Elastic at cuffs.
- Drawstring at waist.
- Adjustable hem.

- **SHELL FABRIC 1**
- MPC Extreme
- WP 10 000 mm
- MP 10 000 g/m²/24h
- PFC-free water repellent finish
- 100% Recycled Polyester
- **LINING**
- 100% Polyester

SIZES

- XS-XXL



Meg Parka Women

ART.NO. 46018611

ABC

SEK **1800**
EUR **180**
DKK **1300**

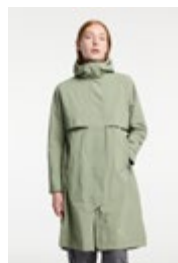
Meg Parka Women is a protective and versatile parka designed for outdoor life in changing weather conditions. Built with MPC Extreme, it offers reliable protection against wind and rain while maintaining comfort throughout the day, making it a dependable choice for both everyday use and time spent outdoors. The fixed hood features both vertical and horizontal adjustment for a precise fit, while the folded chinguard adds extra comfort around the neck. Two zippered front pockets provide practical storage, and adjustable cuffs and waist allow you to customize the fit and enhance protection against the elements. A timeless parka that combines function with a clean and confident outdoor look.



999 BLACK



705 SAND



687 GREY GREEN



862 TAUPE



592 DARK NAVY

FEATURES

- Adjustable hood both vertical and horizontal adjustment.
- Fixed hood.
- Folded chinguard.
- Two front pockets with zippers.
- Adjustable cuffs.
- Adjustable waist.

SHELL FABRIC 1

- MPC Extreme
- WP 10 000 mm
- MP 10 000 g/m²/24h
- PFC-free water repellent finish
- 100% Recycled Polyester
- **LINING**
- 100% Polyester
- e-dye

SIZES

- XS-3XL



Melissa Jacket Women

ART.NO. 46018610

ABC

SEK 1600
EUR 160
DKK 1200

Melissa Jacket Women is a versatile and functional jacket designed for outdoor use in changing conditions. Built with MPC Extreme, it offers reliable protection against wind and rain while maintaining breathability, making it a dependable choice for both everyday wear and time spent outdoors. The adjustable hood features both vertical and horizontal adjustment for a precise fit, while articulated sleeves enhance freedom of movement throughout the day. Two zippered front pockets provide secure storage, and adjustable cuffs together with an adjustable hem allow you to customize the fit and keep the elements out. A protective and versatile jacket with a clean outdoor expression.



999 BLACK



862 TAUPE



705 SAND



687 GREY GREEN



592 DARK NAVY

FEATURES

- Articulated sleeves.
- Adjustable hood both vertical and horizontal adjustment.
- Two front pockets with zippers.
- Adjustable hem.
- Adjustable cuffs.

- **SHELL FABRIC 1**
- MPC Extreme
- WP 10 000 mm
- MP 10 000 g/m²/24h
- PFC-free water repellent finish
- 100% Recycled Polyester
- **LINING**
- 100% Polyester
- e-dye

SIZES

- XS-3XL



Drizzle Poncho Unisex

ART.NO. 465018110

ABC

SEK **800**
EUR **80**
DKK **550**

The Drizzle is a very versatile, roomy, unisex, wind- and waterproof, 2-layer rain poncho that bridges the gap between rain Jackets and pack covers. It keeps you dry on hiking adventures as well as on your daily commute when the skies open up! Powered with Tenson's proprietary MPC Plus membrane technology (WP 10,000 mm / MP 5,000 g/m²/24h), this poncho is waterproof with good breathability. The Drizzle has an adjustable hood and cuffs, a reflective print, and a very practical packable polyester bag.



667 DARK GREEN

999 BLACK

748 BROWN

FEATURES

- Packable.
- Reflective details.
- Taped seams.
- Fixed hood.
- Two front pockets.
- Adjustable cuffs.

SHELL FABRIC 1

- MPC Plus
- WP 10 000 mm
- MP 5 000 g/m²/24h
- PFC-free water repellent finish
- 100% Recycled Polyester

SIZES

- S/M-L/XL



Drizzle Parka Unisex

ART.NO. 465018309

ABC

SEK **900**
EUR **90**
DKK **600**

The Drizzle Parka is a very versatile, roomy unisex wind and waterproof 2-layer rain parka that bridges the gap between rain jackets and pack covers. It keeps you dry during your hiking adventure as well as on your daily commute when the skies open up! Powered with Tenson's proprietary MPC Plus membrane technology (WP 10.000 mm / MP 5.000 g/m²/24h) that makes this poncho waterproof with good breathability. The Drizzle has an adjustable hood and cuffs, a reflective print and comes with a very practical packable polyester bag.



999 BLACK

725 LIGHT BEIGE

FEATURES

- Packable.
- Reflective details.
- Taped seams.
- Fixed hood.
- Two front pockets.
- Adjustable cuffs.

SHELL FABRIC 1

- MPC Plus
- WP 10 000 mm
- MP 5 000 g/m²/24h
- PFC-free water repellent finish
- 100% Recycled Polyester

SIZES

- S/M-L/XL



Drizzle Anorak Unisex

ART.NO. 46018632

ABC

SEK **1000**
EUR **100**
DKK **700**

Drizzle Anorak Unisex is a versatile and protective anorak designed for outdoor use in changing weather conditions. Built with MPC Extreme, it offers reliable protection against wind and rain while maintaining breathability, making it a dependable choice for both everyday wear and outdoor adventures. The adjustable hood features both vertical and horizontal adjustment for a secure fit, while adjustable cuffs and an adjustable hem help keep the elements out. It is equipped with two zippered front pockets and a spacious kangaroo pocket at the front, providing both secure and easy-access storage. A functional anorak with a relaxed silhouette, ready to handle whatever the day brings.



999 BLACK

705 SAND

FEATURES

- Adjustable hood both vertical and horizontal adjustment.
- Two front pockets with zippers.
- Kangaroo pocket at front.
- Adjustable hem.
- Adjustable cuffs.

SHELL FABRIC 1

- MPC Extreme
- 2.5 Layer
- WP 10 000 mm
- MP 10 000 g/m²/24h
- PFC-free water repellent finish
- 100% Recycled Polyester

SIZES

- XS-XXL



Skye Storm Jacket Women

ART.NO. 46018633

ABC

SEK 1400
EUR 140
DKK 1000

Skye Storm Jacket Women is a protective and versatile jacket designed for outdoor use in changing weather conditions, with a modern silhouette that brings a strong sense of style to technical outerwear. Built with MPC Extreme, it offers reliable protection against wind and rain while maintaining comfort, whether you're heading out on the trail or moving through the city. The fixed hood features vertical adjustment for a clean look and adaptable function, while the folded chinguard adds comfort around the neck. Articulated sleeves enhance mobility, and adjustable cuffs with Velcro-adjustable sleeve straps, together with an adjustable hem, allow you to fine-tune the fit and keep the elements out. Two zippered front pockets provide secure storage, and the waterproof center front zipper adds extra protection in wet conditions. A statement piece that blends performance with a confident, contemporary look.



967 GREY

724 TAUPE

644 BLUE GREY

FEATURES

- Adjustable hood both vertical and horizontal adjustment.
- Folded chinguard.
- Two front pockets with zippers.
- Adjustable cuffs and articulated sleeves.
- Adjustable hem.
- Velcro-adjustable sleeve straps.
- Water-repellent zippers.

- **SHELL FABRIC 1**
 - MPC Extreme
 - WP 15 000 mm
 - MP 10 000 g/m²/24h
 - PFC-free water repellent finish
 - 100% Recycled Polyester
 - **LINING**
 - 100% Recycled Polyester
- SIZES**
- XS-XXL



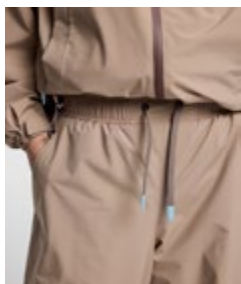
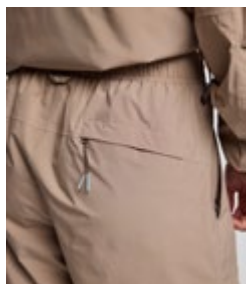
Skye Storm Pants Women

ART.NO. 46018551

ABC

SEK **800**
EUR **80**
DKK **600**

Skye Storm Pants Women are versatile and comfortable outdoor pants designed for active days in changing conditions. Built with MPC Extreme, they offer reliable protection against wind and rain while maintaining breathability, making them a dependable choice for everything from hiking to everyday outdoor use. They feature an elastic waist with cord adjustment for a flexible and secure fit, along with adjustable leg endings that allow you to adapt to different conditions and footwear. Practical storage includes two zippered front pockets and one zippered back pocket to keep your essentials safe, and a hanger at the outside back adds convenience. A protective and easy-to-wear pair of pants ready for shifting weather.



967 GREY



724 TAUPE

FEATURES

- Hanger at outside back.
- Two front pockets with zippers.
- One back pocket with zipper.
- Elastic waist with cord adjustment.
- Adjustable leg ending.

- **SHELL FABRIC 1**
- MPC Extreme
- WP 15 000 mm
- MP 10 000 g/m2/24h
- PFC-free water repellent finish
- 100% Recycled Polyester
- **LINING**
- 100% Recycled Polyester

SIZES

- XS-XXL



Apelviken Maxi Coat Women

ART.NO. 465018138

ABC

SEK **1000**
EUR **100**
DKK **700**

Apelviken Maxi Coat is a long trendy women's raincoat with an A-line silhouette and a classic stylish look. It's made of 100% polyurethane with a soft tricot backing, welded seams and a 5K waterproof rating to keep you dry in the heaviest downpours.



873 BROWN



999 BLACK

FEATURES

- Adjustable hood (vertical).
- Two front pockets.
- Adjustable cuffs.
- Slit at sides.
- Ventilation.
- Welded seams.

SHELL FABRIC 1

- WP 5 000 mm
- Tricot backing
- 100% Polyurethane

SIZES

- XS-XXL

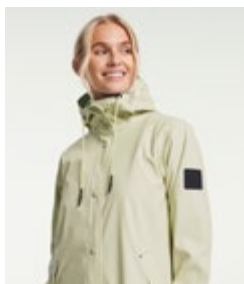
Apelviken Rain Coat Women

ART.NO. 465017643

ABC

SEK 900
EUR 90
DKK 600

Apelviken is a women's raincoat in an A-line silhouette and a classic stylish look. Made with 100% polyurethane and a soft tricot backing, welded seams and a 5,000 mm waterproof rating, it keeps you dry in the heaviest downpours. The raincoat has adjustable cuffs and articulated sleeves for the best possible fit. Comes with a fixed hood.



873 BROWN



999 BLACK



649 OLIVE



964 DARK BLUE



434 PURPLE



711SAND

FEATURES

- Adjustable cuffs.
- Articulated sleeves.
- Fixed hood.
- Welded seams.
- Two front pockets.

SHELL FABRIC 1

- WP 5 000 mm
- Tricot backing
- 100% Polyurethane

SIZES

- XS-XXL

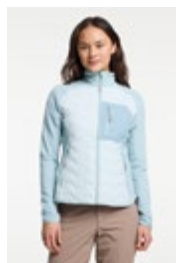
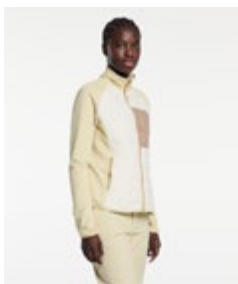
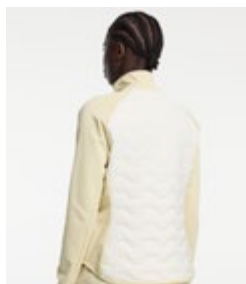
Miyabi Hybrid Zip Women

ART.NO. 46018606

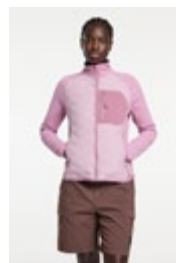
ABC

SEK 1200
EUR 120
DKK 900

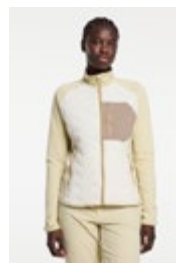
Miyabi Hybrid Zip Women is a lightweight and versatile hybrid layer designed for active outdoor use in cooler conditions. The quilted padding provides warmth where you need it, while the sides and sleeves in power comfort flat fleece with a grid back enhance breathability and thermal regulation, allowing for freedom of movement throughout the day. Articulated sleeves enhance mobility, while the folded chinguard adds comfort around the neck. It features a zippered chest pocket and two zippered front pockets for secure storage, and elastic bindings at the hem and sleeve endings ensure a close and comfortable fit. A refined hybrid layer that balances warmth, comfort, and mobility in motion.



511 LIGHT TURQUOISE



431 PINK



015 CREAM

FEATURES

- Articulated sleeves.
- Quilted padding.
- Folded chinguard.
- Two front pockets with zippers.
- Chest pocket with zipper.
- Elastic binding at hem & sleeve ends.

- **SHELL FABRIC 1**
- Lightweight
- Stretch fabric with quilted thin insulation
- 93% Polyamide
- 7% Elastane
- **SHELL FABRIC 2**
- Power comfort
- Stretch
- Quick dry
- Flat fleece with grid back
- Thermal regulating
- 53% Recycled Polyester
- 37% Polyester
- 10% Elastane

SIZES

- XS-XXL



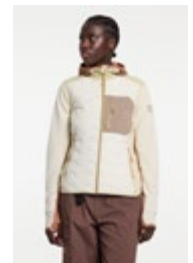
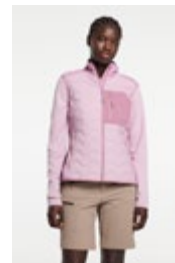
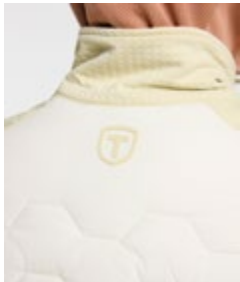
Miyabi Hybrid Vest Women

ART.NO. 46018608

ABC

SEK **1000**
EUR **100**
DKK **700**

Miyabi Hybrid Vest Women is a lightweight and warming vest designed for active outdoor days when you need core insulation without restricting movement. The quilted padding provides comfortable warmth, while the sides in power comfort flat fleece with a grid back enhance breathability and thermal regulation, making it easy to layer over or under other garments. It features a zippered chest pocket and two zippered front pockets for practical storage, along with elastic binding at the hem and armholes for a secure and comfortable fit. A versatile vest that adds warmth without bulk, perfect for layering through changing conditions.



511 LIGHT TURQUOISE

431 PINK

015 CREAM

FEATURES

- Quilted padding.
- Chest pocket with zipper.
- Two front pockets with zippers.
- Elastic binding at hem.
- Elastic bindings at armhole.

- **SHELL FABRIC 1**
- Lightweight
- Stretch fabric with quilted thin insulation
- 93% Polyamide
- 7% Elastane
- **SHELL FABRIC 2**
- Power comfort
- Stretch
- Quick dry
- Flat fleece with grid back
- Thermal regulating
- 53% Recycled Polyester
- 37% Polyester
- 10% Elastane

SIZES

- XS-XXL



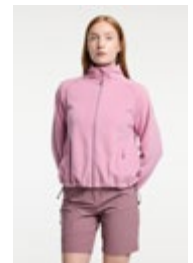
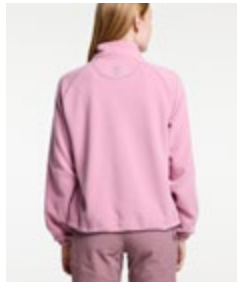
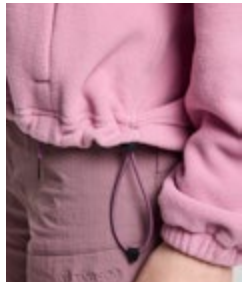
Mori Fleece Women

ART.NO. 46018664

ABC

SEK 700
EUR 70
DKK 500

Mori Fleece is a versatile mid layer designed for outdoor life, combining warmth, comfort, and a clean, modern look. The soft fleece fabric provides lightweight insulation while remaining breathable, making it ideal for layering on hikes, weekend trips, or everyday adventures. Designed with a folded chinguard for added comfort and protection, and equipped with two zippered front pockets for secure storage. Elastic cuffs and an adjustable hem with cord allow you to customize the fit and keep warmth in when needed. A reliable fleece built for life outdoors, season after season.



873 BROWN

705 SAND

412 LIGHT PURPLE

FEATURES

- Folded chinguard.
- Two front pockets with zippers.
- Elastic at cuffs.
- Elastic waist with cord adjustment.

SHELL FABRIC 1

- Fleece
- Stretch
- Quick dry
- 100% Recycled Polyester

SIZES

- XS-3XL



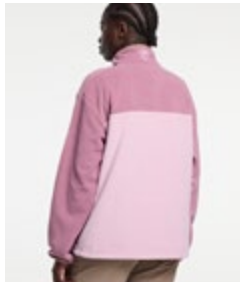
Sydney Fleece Women

ART.NO. 46018679

ABC

SEK 700
EUR 70
DKK 500

Sydney Fleece Women is a soft and comfortable fleece designed for everyday outdoor wear. Lightweight yet warming, it offers a relaxed feel that works just as well on its own as layered under a jacket during cooler days. A zippered chest pocket provides practical storage, while the adjustable hem and elastic sleeve endings create a flexible and comfortable fit. A versatile fleece that combines warmth and simplicity for life outdoors.



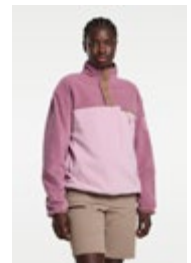
940 GREY



705 SAND



641 GREY GREEN



431 PINK

FEATURES

- Chest pocket with zipper.
- Adjustable hem.
- Elastic binding at sleeve ends.

SHELL FABRIC 1

- Fleece
- Stretch
- Quick dry
- 100% Recycled Polyester

SIZES

- XS-3XL



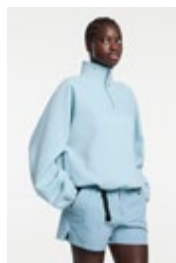
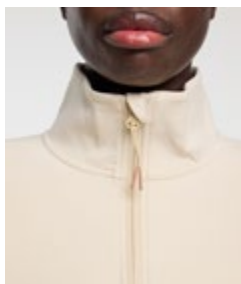
Flaura Half Zip Women

ART.NO. 46018698

ABC

SEK 800
EUR 80
DKK 600

Flaura Half Zip Women is a comfortable and versatile mid layer designed for outdoor days when you need both warmth and flexibility. The soft fabric provides a cozy feel while remaining breathable, making it ideal for layering or wearing on its own in cooler conditions. The half zip allows for easy ventilation, while the high collar and folded chinguard offer added protection and comfort around the neck. Two zippered front pockets keep your essentials secure, and elastic cuffs together with an adjustable hem ensure a flexible and comfortable fit. A reliable layer that brings both warmth and ease to your time outdoors.



641 GREY GREEN



431 PINK



014 CREAM

FEATURES

- Half zip at neck opening.
- High collar.
- Folded chinguard.
- Two front pockets with zippers.
- Adjustable hem.
- Elastic at cuffs.

SHELL FABRIC 1

- Power comfort
- Stretch
- 80% Recycled Polyester
- 20% Elastane

SIZES

- XS-XXL



Lazer Hoodie Half Zip Women

ART.NO. 46018587

ABC

SEK **800**
EUR **80**
DKK **600**

Lazer Hoodie Half Zip Women is a technical and lightweight hoodie designed for high-energy outdoor activities. Built to move with you, it combines comfort and performance in a clean, modern design that works just as well on the trail as during active everyday use. The half zip allows for easy ventilation, while the hood with elastic provides a secure fit when needed. Extended sleeves with thumb loops offer extra coverage and keep the sleeves in place during movement. It features a folded chinguard for added comfort and reflective details for increased visibility. Elastic bindings at the hem and sleeve endings ensure a close and flexible fit. A dynamic layer made to keep up with your pace.



431 PINK



014 CREAM

FEATURES

- Reflective details.
- Extended sleeves with thumb loops.
- Half zip at neck opening.
- Elastic at hood.
- Folded chinguard.
- Elastic binding at hem & sleeve ends.

- **SHELL FABRIC 1**
- Lightweight
- Quick dry
- Stretch
- Thermal regulating
- High breathability
- 100% Recycled Polyester
- **SHELL FABRIC 2**
- Mesh for ventilation
- 100% Recycled Polyester

SIZES

- XS-XXL



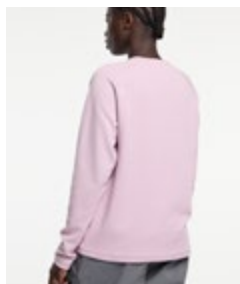
Waffle Long Sleeve Women

ART.NO. 46018735

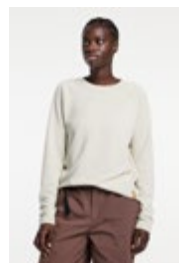
ABC

SEK 600
EUR 60
DKK 450

Waffle Long Sleeve Women is a soft and functional top designed for comfort during active outdoor days. The waffle-structured fabric enhances breathability while offering a lightweight feel, helping to regulate temperature and keep you comfortable across changing conditions. Made from 95% recycled polyester and 5% elastane, it combines stretch and durability with a more sustainable approach. The moisture-wicking and quick-drying properties keep you feeling dry and fresh, whether you're on the move or layering up. With its clean design, round neck, and long sleeves, it's a versatile piece that works just as well on its own as under a jacket.



999 BLACK



725 LIGHT BEIGE



580 DARK NAVY



431 PINK

FEATURES

- Round neck.
- Long sleeve.

- **SHELL FABRIC 1**
- Waffle structure
- Moisture-wicking
- Quick dry
- 95% Recycled Polyester
- 5% Elastane

SIZES

- XS-XXL



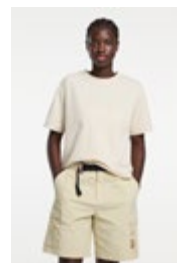
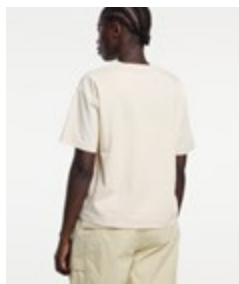
Cool Tee Women

ART.NO. 46018578

ABC

SEK 400
EUR 40
DKK 300

Cool Tee Women is a lightweight and functional t-shirt designed to keep you comfortable on warm and active days outdoors. Made from a cotton blend fabric, it offers a soft and breathable feel that works well during both activity and everyday wear. With its smooth touch and easy comfort, it's made for movement and long days in the sun. The round neck and short sleeve design create a clean, versatile look that works just as well on the trail as in everyday settings. A refreshing essential you'll reach for when the temperature rises.



999 BLACK

431 PINK

014 CREAM

FEATURES

- Round neck.
- Short sleeve.

- SHELL FABRIC 1
- Moisture-wicking
- Cooling effect
- UPF 50+
- 74% Organic Cotton
- 26% Recycled Polyester with Sorona®

SIZES

- XS-XXL



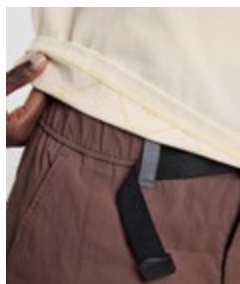
Cool Tee Long Sleeve Women

ART.NO. 46018580

ABC

SEK 500
EUR 50
DKK 400

Cool Tee Long Sleeve Women is a lightweight and functional long sleeve designed for warm conditions and active outdoor days. Made from a cotton blend fabric, it offers soft and breathable comfort against the skin, making it ideal for extended time outdoors. The long sleeves provide extra coverage from the sun, while the clean design and round neck create a versatile look that works both on its own and as part of a layered outfit. A perfect balance of comfort, coverage, and effortless wear.



999 BLACK

431 PINK

014 CREAM

FEATURES

- Round neck.
- Long sleeve.

SHELL FABRIC 1

- Moisture-wicking
- Cooling effect
- UPF 50+
- 74% Organic Cotton
- 26% Recycled Polyester with Sorona®

SIZES

- XS-XXL



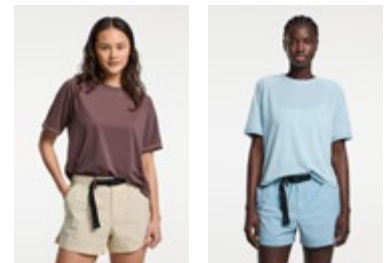
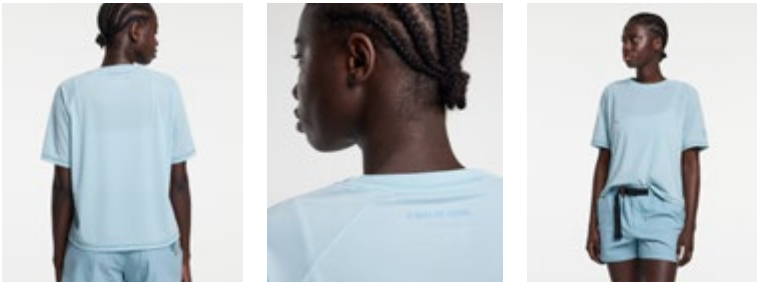
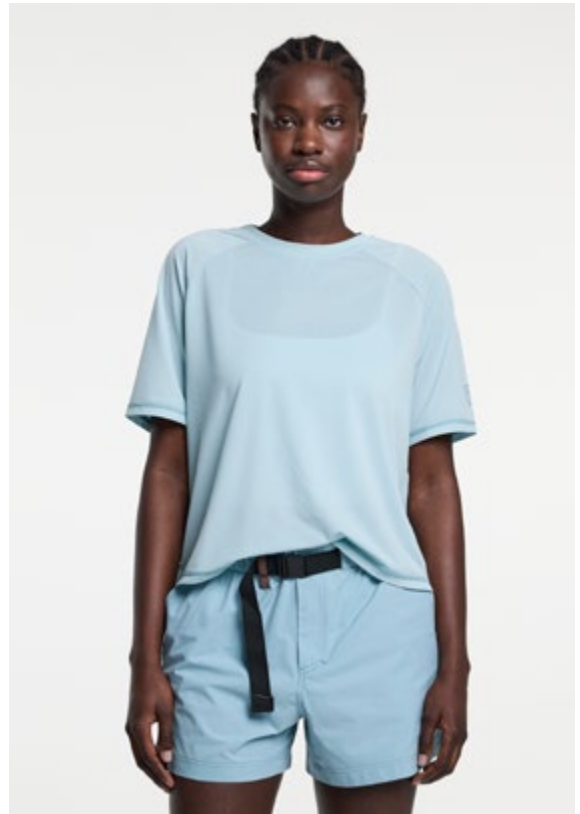
Trail Tee Women

ART.NO. 46018669

ABC

SEK **300**
EUR **30**
DKK **200**

Trail Tee Women is a lightweight and easy-to-wear t-shirt made for movement and warm days outdoors. Made from a quick-drying stretch fabric, it keeps you comfortable throughout the day, whether you're hiking, exploring new places, or simply enjoying time outside. With its clean design, round neck, and short sleeves, it offers a versatile look that fits effortlessly into any outdoor wardrobe. A go-to piece for everyday adventures in the sun.



873 BROWN

641 GREY GREEN

FEATURES

- Round neck.
- Short sleeve.

SHELL FABRIC 1

- Quick dry
- Lightweight
- Stretch
- 86% Recycled Polyester
- 14% Elastane

SIZES

- XS-XXL



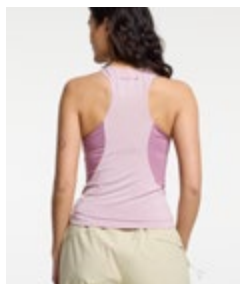
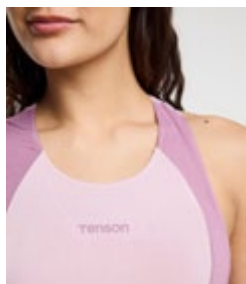
Riri Tank Top Women

ART.NO. 46018666

ABC

SEK 300
EUR 30
DKK 200

Riri Tank Top is a clean and comfortable top in soft bamboo fabric designed for everyday outdoor life. The lightweight material offers a relaxed feel that keeps you comfortable during warm days and active moments. The round neck creates a classic and versatile look, while the minimal design makes it easy to wear on its own or layered under a shirt or jacket. A timeless staple with a natural place in an active outdoor wardrobe.



641 GREY GREEN



431 PINK

FEATURES

- Round neck.

- SHELL FABRIC 1
- Soft
- Stretch
- Moisture-wicking
- 95% Bamboo
- 5% Elastane

SIZES

- XS-XXL

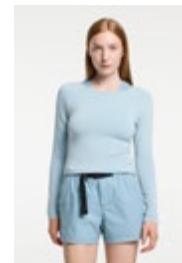
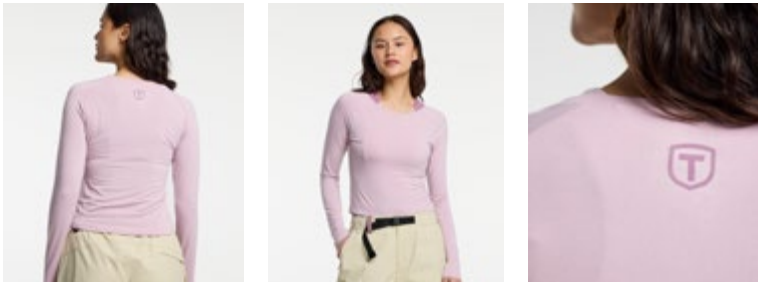
Riri Long Sleeve Women

ART.NO. 46018667

ABC

SEK 350
EUR 35
DKK 250

Riri Long Sleeve is a clean and comfortable long sleeve top in soft bamboo fabric, designed for everyday outdoor life. The lightweight material offers a relaxed feel that works just as well on its own as layered under a jacket or vest. The boat neck adds a modern and feminine touch while enhancing comfort and freedom of movement, and the minimal design makes it a versatile choice for both casual days and light outdoor activities. A timeless essential with a refined outdoor feel.



641 GREY GREEN

431 PINK

FEATURES

- Boat neck.

- SHELL FABRIC 1
- Soft
- Stretch
- Moisture-wicking
- 95% Bamboo
- 5% Elastane

SIZES

- XS-XXL

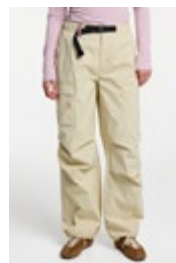
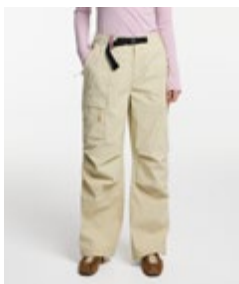
Camper Cargo Pants Women

ART.NO. 46018595

ABC

SEK **1000**
EUR **100**
DKK **700**

Camper Cargo Pants Women are versatile and comfortable outdoor pants designed for active days and everyday exploration. The stretch ripstop fabric offers a lightweight yet durable feel that moves with you, while quick-drying properties help you stay comfortable throughout the day. With articulated knees for enhanced mobility and adjustable leg endings for a flexible fit, they are built to adapt to different activities and conditions. The adjustable waist with an integrated belt ensures a secure and flattering fit, and a hanger at the outside back adds practical ease. Zippered front, back, and leg pockets provide secure storage for your essentials. Easy to wear and ready for anything, these pants fit seamlessly into an active outdoor lifestyle.



967 GREY

873 BROWN

705 SAND

FEATURES

- Belt in waist.
- Hanger at outside back.
- Articulated knees.
- Two front pockets with zippers.
- One back pocket with zipper.
- One leg pocket with zipper.
- Adjustable leg ending.

SHELL FABRIC 1

- Stretch
- Ripstop
- Durable
- Quick dry
- 94% Recycled Polyamide
- 6% Elastane

SIZES

- XS-XXL



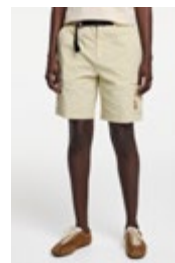
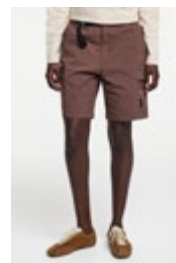
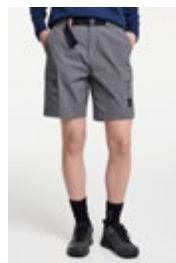
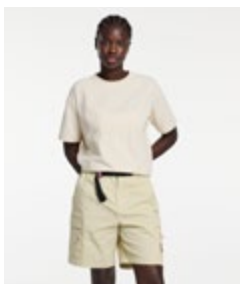
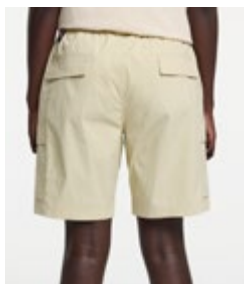
Camper Hike Shorts Women

ART.NO. 46018743

ABC

SEK 800
EUR 80
DKK 600

Camper Hike Shorts Women are lightweight and versatile shorts designed for active days on the trail and beyond. Made from stretch ripstop fabric, they offer a durable yet flexible feel that moves with you, while quick-drying properties keep you comfortable as the temperature rises. The elastic waist with an integrated belt provides a secure and adjustable fit, making them easy to wear throughout the day. With two slanted open front pockets, two zippered leg pockets, and two back pockets, they offer plenty of storage for your essentials. Built for movement and made for long days outdoors, these shorts are ready to follow wherever your plans take you.



967 GREY

873 BROWN

705 SAND

FEATURES

- Belt in waist.
- Two back pockets.
- Two leg pockets with zippers.
- Two slanted open front pockets.
- Elastic waist.

SHELL FABRIC 1

- Stretch
- Ripstop
- Durable
- Quick dry
- 94% Recycled Polyamide
- 6% Elastane

SIZES

- XS-XXL



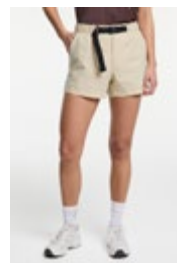
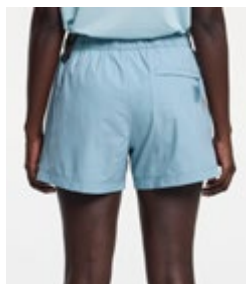
Camper Quick Dry Shorts Women

ART.NO. 46018657

ABC

SEK 600
EUR 60
DKK 450

Camper Quick Dry Shorts Women are lightweight and versatile shorts designed for warm-weather adventures and everyday outdoor use. Made from stretch ripstop fabric, they offer a durable yet flexible feel that moves with you, while quick-drying properties keep you comfortable throughout the day. An adjustable waist with an integrated belt ensures a secure and personalized fit, and the clean design is complemented by practical storage with two slanted open front pockets and a zippered back pocket. Easy to wear and easy to pack, these are shorts made for sunny days, spontaneous plans, and time spent outdoors.



705 SAND

644 BLUE GREY

FEATURES

- Belt in waist.
- One back pocket with zipper.
- Two slanted open front pockets.
- Adjustable waist.

SHELL FABRIC 1

- Lightweight
- Stretch
- Ripstop
- Durable
- Quick dry
- 50% Recycled Polyester
- 50% Polyester

SIZES

- XS-XXL





A man is shown from the side, wearing a dark maroon long-sleeved shirt and light blue trousers. He is standing against a textured, light-colored wall. The image is a promotional graphic for a men's collection.

Men's collection.

SPRING / SUMMER 2027.

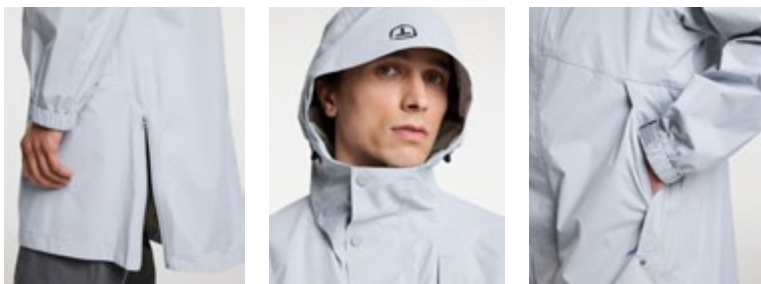
Hikari Parka Men

ART.NO. 46018635

ABC

SEK **3000**
EUR **290**
DKK **2200**

Hikari Parka Men is a protective and versatile parka designed for outdoor use in changing weather conditions. Built with MPC Extreme X and a waterproof level of WP 20000, it delivers the highest level of protection against wind and rain while maintaining comfort, whether you're navigating the city or heading out into nature. The fixed hood features both vertical and horizontal adjustment for a precise fit, while the folded chinguard adds comfort around the neck. It includes a zippered chest pocket and two zippered front pockets for secure storage, and water-repellent zippers provide extra protection in wet conditions. Adjustable cuffs and Velcro-adjustable sleeve straps allow you to fine-tune the fit and keep out wind and cold. A high-performance outer layer designed to handle demanding weather with confidence.



999 BLACK

933 LIGHT GREY

FEATURES

- Fixed hood.
- Adjustable hood both vertical and horizontal adjustment.
- Folded chinguard.
- Chest pocket with zipper.
- Two front pockets with zippers.
- Adjustable cuffs.
- Velcro-adjustable sleeve straps.
- Water-repellent zippers.

SHELL FABRIC 1

- MPC Extreme X
- 2.5 Layer
- Ripstop
- WP 20 000 mm
- MP 20 000 g/m2/24h
- PFC-free water repellent finish
- 100% Recycled Polyamide

SIZES

- S-3XL



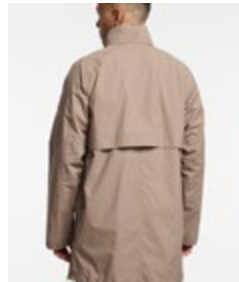
Hikari Jacket Men

ART.NO. 46018618

ABC

SEK **2500**
EUR **240**
DKK **1900**

Hikari Jacket Men is a versatile and functional jacket designed for active outdoor use. Built with MPC Extreme X and a waterproof level of WP 20000, it delivers the highest level of protection against wind and rain while maintaining comfort and mobility throughout the day. Articulated sleeves enhance freedom of movement, while the emergency hood is neatly rolled into the collar, ready when the weather shifts. A zippered chest pocket and two zippered front pockets provide convenient storage, and adjustable cuffs help you fine-tune the fit and keep the elements out. A high-performance jacket that adapts seamlessly to both movement and changing conditions.



999 BLACK



933 LIGHT GREY



862 TAUPE

FEATURES

- Articulated sleeves.
- Detachable hood.
- Hood folded inside collar.
- Chest pocket with zipper.
- Two front pockets with zippers.
- Adjustable cuffs.

SHELL FABRIC 1

- MPC Extreme X
- 2.5 Layer
- Ripstop
- WP 20 000 mm
- MP 20 000 g/m2/24h
- PFC-free water repellent finish
- 100% Recycled Polyamide

SIZES

- S-3XL



Trench Nouveau Men

ART.NO. 465017831

ABC

SEK **4000**
EUR **390**
DKK **3000**

This is Tenson's contemporary take on the timeless trench coat – the Trench Nouveau, which embodies simple functionality as well as elegance and versatility. Made from 100% recycled polyester and powered with Tenson's proprietary MPC Extreme technology, taped seams and water-repellent zippers, it's wind- and waterproof with a PFC-free water-repellent surface. The Trench Nouveau is a stylish outdoor apparel piece for all weather conditions.

Trivia: Did you know that the khaki-colored trench coat was originally developed for the British Army officers before the First World War, becoming popular while used in the trenches. It was originally made from gabardine, waterproofed with lanolin before being woven. Today it is powered with Tenson's waterproof proprietary MPC technology, keeping you dry and comfortable all year round no matter the weather.



750 LIGHT BROWN

999 BLACK

FEATURES

- Belt in waist.
- Taped seams.
- Adjustable hood (vertical).
- Detachable hood.
- High collar.
- Inner pocket with zip.
- Two front pockets.
- Adjustable cuffs.
- Slits at the sides with zippers.
- Ventilation.

- **SHELL FABRIC 1**
- MPC Extreme Shell
- 3 Layer stretch
- WP 10 000 mm
- MP 10 000 g/m²/24h
- PFC-free water repellent finish
- 50% Recycled Polyester
- 50% Polyester

SIZES

- S-XXL



Magellan Jacket Men

ART.NO. 46018617

ABC

SEK 1600
EUR 160
DKK 1200

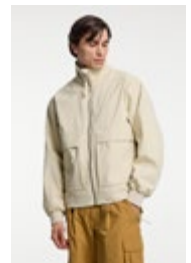
Magellan Jacket Men is a durable and functional jacket designed for outdoor use in changing weather conditions. Built with MPC Extreme, it offers reliable protection against wind and rain while maintaining breathability, making it a dependable choice for both everyday wear and more demanding activities. The ribbed collar adds a structured and comfortable feel, while the folded chinguard enhances comfort around the neck. With four zippered front pockets, it provides generous and secure storage for your essentials. Ribbed cuffs ensure a close fit that helps keep cold air out. A robust jacket that combines practical details with a clean and confident outdoor look.



967 GREY



873 BROWN



705 SAND

FEATURES

- Folded chinguard.
- Rib at collar.
- Four front pockets with zippers.
- 1x1 rib at cuff.

SHELL FABRIC 1

- MPC Extreme
- WP 10 000 mm
- MP 10 000 g/m²/24h
- PFC-free water repellent finish
- 100% Recycled Polyester

LINING

- 100% Recycled Polyester

SIZES

- S-3XL



Maxden Jacket Men

ART.NO. 46018626

ABC

SEK **2000**
EUR **190**
DKK **1500**

Maxden Jacket Men is a technical and robust jacket designed for outdoor use in tough and changing weather conditions. Built with MPC Extreme, it provides dependable protection against wind and rain while maintaining breathability, making it ideal for both demanding adventures and everyday use. The detachable hood features both vertical and horizontal adjustment for a precise fit, while the folded chinguard adds comfort in rough weather. With a zippered chest pocket and four zippered front pockets, it offers generous and secure storage for your essentials. Water-repellent zippers add an extra layer of protection, and adjustable cuffs, hem, and Velcro-adjustable sleeve straps allow you to fine-tune the fit and seal out the elements. A durable and high-performing jacket ready for whatever the weather brings.



999 BLACK

862 TAUPE

687 GREY GREEN

FEATURES

- Adjustable hood both vertical and horizontal adjustment.
- Detachable hood.
- Folded chinguard.
- Chest pocket with zipper.
- Four front pockets with zippers.
- Adjustable cuffs.
- Adjustable hem.
- Velcro-adjustable sleeve straps.
- Water-repellent zippers.

SHELL FABRIC 1

- MPC Extreme
- WP 10 000 mm
- MP 10 000 g/m²/24h
- PFC-free water repellent finish
- 100% Recycled Polyester
- **LINING**
- 100% Polyester
- e-dye

SIZES

- S-3XL



Reporter Jacket Men

ART.NO. 465018357

ABC

SEK **2000**
EUR **190**
DKK **1500**

This waterproof versatile army style jacket is powered with Tenson's proprietary MPC Extreme membrane technology (WP 10.000 mm / MP 10.000 g/m2/24h) that makes it waterproof with exceptional breathability. Reporter features a roll-up hood in the collar, one inner pockets for secure storage. The two waist pockets can be accessed from the top and the sides for storage or for warming your hands.



592 DARK NAVY



999 BLACK



873 BROWN

FEATURES

- Articulated sleeves.
- Taped seams.
- Detachable hood inside collar.
- Inner pocket with zip.
- Two chest pockets.
- Two front pockets with zippers.
- Adjustable cuffs.

- **SHELL FABRIC 1**
- MPC Extreme Stretch
- WP 10 000 mm
- MP 10 000 g/m2/24h
- PFC-free water repellent finish
- 50% Recycled Polyester
- 50% Polyester
- **LINING**
- 100% Polyester
- e-dye

SIZES

- S-3XL



Jaxon Jacket Men

ART.NO. 46018629

ABC

SEK 2000
EUR 190
DKK 1500

Jaxon Jacket Men is a technical and versatile jacket designed for outdoor use in changing and demanding conditions. Built with MPC Extreme, it offers reliable protection against wind and rain while maintaining breathability, making it a strong companion for both everyday wear and more rugged adventures. Articulated sleeves provide enhanced freedom of movement, while the hood can be neatly folded into the collar when not in use, without compromising on adjustability when needed. The hood features vertical adjustment, and the folded chinguard adds extra comfort around the neck. A zippered chest pocket and two zippered front pockets keep your essentials secure, while adjustable cuffs, Velcro-adjustable sleeve straps, and an adjustable hem allow you to fine-tune the fit. A dependable jacket built to adapt, whether you're on the move or facing the elements head-on.



999 BLACK



933 LIGHT GREY



738 TAUPE



645 OLIVE



592 DARK NAVY

FEATURES

- Articulated sleeves.
- Hood folded inside collar.
- Adjustable hood both vertical and horizontal adjustment.
- Folded chinguard.
- Two front pockets with zippers.
- Chest pocket with zipper.
- Velcro-adjustable sleeve straps.
- Adjustable cuffs.
- Adjustable hem.

SHELL FABRIC 1

- MPC Extreme
- WP 10 000 mm
- MP 10 000 g/m²/24h
- PFC-free water repellent finish
- 100% Recycled Polyester
- LINING
- 100% Polyester
- e-dye

SIZES

- S-4XL



Riley Jacket Men

ART.NO. 46018628

ABC

SEK **1600**
EUR **180**
DKK **1400**

Riley Jacket Men is a technical and durable jacket designed for outdoor use in demanding conditions. Built with MPC Extreme, it offers reliable protection against wind and rain while maintaining breathability, making it a strong companion for both everyday wear and more challenging adventures. Articulated sleeves enhance freedom of movement, while the detachable hood with both vertical and horizontal adjustment allows you to adapt to changing weather. The jacket features a zippered chest pocket and two zippered front pockets for secure storage, and adjustable cuffs, hem, and Velcro-adjustable sleeve straps ensure a precise and comfortable fit. A protective and versatile jacket made to handle whatever the day brings.



999 BLACK



738 TAUPE



687 GREY GREEN



592 DARK NAVY

FEATURES

- Articulated sleeves.
- Detachable hood.
- Adjustable hood both vertical and horizontal adjustment.
- Two front pockets with zippers.
- Chest pocket with zipper.
- Adjustable hem.
- Adjustable cuffs.
- Velcro-adjustable sleeve straps.

SHELL FABRIC 1

- MPC Extreme
- WP 10 000 mm
- MP 10 000 g/m²/24h
- PFC-free water repellent finish
- 100% Recycled Polyester

LINING

- 100% Polyester
- e-dye

SIZES

- S-4XL



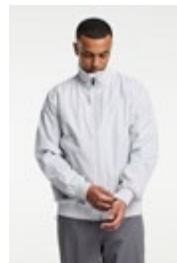
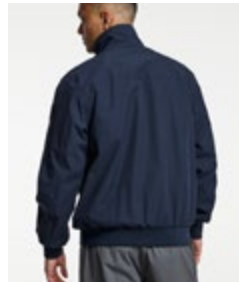
Quinn Jacket Men

ART.NO. 46018627

ABC

SEK **1900**
EUR **180**
DKK **1400**

Quinn Jacket Men is a clean and versatile jacket designed for active everyday use with a refined outdoor feel. The lightweight construction and articulated sleeves provide comfort and freedom of movement, making it an easy choice for days on the go. The 1x1 ribbed collar adds a structured and modern look, while the folded chinguard enhances comfort around the neck. Two zippered front pockets offer secure storage, and water-repellent zippers provide extra protection in light rain. Elastic finishes at the bottom hem and cuffs ensure a close and comfortable fit. A sleek and functional jacket that moves effortlessly between city life and outdoor moments.



999 BLACK

913 LIGHT GREY

738 TAUPE

592 DARK NAVY

FEATURES

- Articulated sleeves.
- Folded chinguard.
- 1x1 rib at collar.
- Two front pockets with zippers.
- Water-repellent zippers.
- bottom hem and cuffs.

SHELL FABRIC 1

- MPC Extreme
- WP 10 000 mm
- MP 10 000 g/m²/24h
- PFC-free water repellent finish
- 100% Recycled Polyester

LINING

- 100% Polyester

SIZES

- S-4XL



Skye Storm Jacket Men

ART.NO. 46018634

ABC

SEK **1400**
EUR **140**
DKK **1000**

Skye Storm Jacket Men is a protective and versatile jacket designed for outdoor use in changing weather conditions, combining technical performance with a clean and modern design. Built with MPC Extreme, it offers reliable protection against wind and rain while maintaining comfort, whether you're heading out on the trail or navigating everyday life outdoors. The hood is rolled into the collar and features vertical adjustment for a streamlined appearance and functional flexibility, while the folded chinguard adds comfort around the neck. Articulated sleeves enhance mobility, and adjustable cuffs with Velcro-adjustable sleeve straps, together with an adjustable hem, allow you to fine-tune the fit and keep the elements out. Two zippered front pockets provide secure storage, and the water-proof center front zipper adds extra protection in wet conditions. A refined jacket that balances protection, comfort, and a modern outdoor expression.



999 BLACK



967 GREY



913 LIGHT GREY



437 MAUVE PURPLE

FEATURES

- Adjustable hood both vertical and horizontal adjustment.
- Hood folded inside collar.
- Folded chinguard.
- Two front pockets with zippers.
- Adjustable cuffs and articulated sleeves.
- Adjustable hem.
- Velcro-adjustable sleeve straps.
- Water-repellent zippers.

- **SHELL FABRIC 1**
 - MPC Extreme
 - WP 15 000 mm
 - MP 10 000 g/m²/24h
 - PFC-free water repellent finish
 - 100% Recycled Polyester
 - **LINING**
 - 100% Recycled Polyester
- SIZES**
- S-3XL



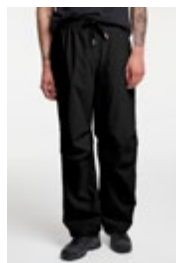
Skye Storm Pants Men

ART.NO. 46018552

ABC

SEK 800
EUR 80
DKK 600

Skye Storm Pants Men are functional and easy-to-wear outdoor pants designed for movement and comfort in varying conditions. Made with MPC Extreme, they provide protection against wind and rain while staying breathable, making them well suited for both active use and everyday wear outdoors. An elastic waist with cord adjustment ensures a comfortable fit, while adjustable leg endings let you fine-tune the silhouette and function. The pants are equipped with two zippered front pockets and one zippered back pocket for secure storage, and a hanger at the outside back adds practical convenience. A versatile pair of pants built to handle changing conditions with ease.



999 BLACK

967 GREY

913 LIGHT GREY

FEATURES

- Hanger at outside back.
- Two front pockets with zippers.
- One back pocket with zipper.
- Elastic waist with cord adjustment.
- Adjustable leg ending.

SHELL FABRIC 1

- MPC Extreme
- WP 15 000 mm
- MP 10 000 g/m²/24h
- PFC-free water repellent finish
- 100% Recycled Polyester

LINING

- 100% Recycled Polyester

SIZES

- S-XXL



Drizzle Poncho Unisex

ART.NO. 465018110

ABC

SEK **800**
EUR **80**
DKK **550**

The Drizzle is a very versatile, roomy, unisex, wind- and waterproof, 2-layer rain poncho that bridges the gap between rain Jackets and pack covers. It keeps you dry on hiking adventures as well as on your daily commute when the skies open up! Powered with Tenson's proprietary MPC Plus membrane technology (WP 10,000 mm / MP 5,000 g/m²/24h), this poncho is waterproof with good breathability. The Drizzle has an adjustable hood and cuffs, a reflective print, and a very practical packable polyester bag.



999 BLACK

748 BROWN

667 DARK GREEN

FEATURES

- Packable.
- Reflective details.
- Taped seams.
- Fixed hood.
- Two front pockets.
- Adjustable cuffs

SHELL FABRIC 1

- MPC Plus
- WP 10 000 mm
- MP 5 000 g/m²/24h
- PFC-free water repellent finish
- 100% Recycled Polyester

SIZES

- S/M-L/XL



Drizzle Parka Unisex

ART.NO. 465018309

ABC

SEK **900**
EUR **90**
DKK **600**

The Drizzle Parka is a very versatile, roomy unisex wind and waterproof 2-layer rain parka that bridges the gap between rain jackets and pack covers. It keeps you dry during your hiking adventure as well as on your daily commute when the skies open up! Powered with Tenson's proprietary MPC Plus membrane technology (WP 10.000 mm / MP 5.000 g/m²/24h) that makes this poncho waterproof with good breathability. The Drizzle has an adjustable hood and cuffs, a reflective print and comes with a very practical packable polyester bag.



725 LIGHT BEIGE

999 BLACK

FEATURES

- Packable.
- Reflective details.
- Taped seams.
- Fixed hood.
- Two front pockets.
- Adjustable cuffs

SHELL FABRIC 1

- MPC Plus
- WP 10 000 mm
- MP 5 000 g/m²/24h
- PFC-free water repellent finish
- 100% Recycled Polyester

SIZES

- S/M-L/XL



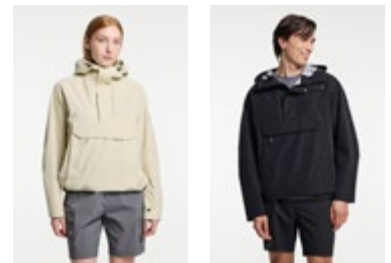
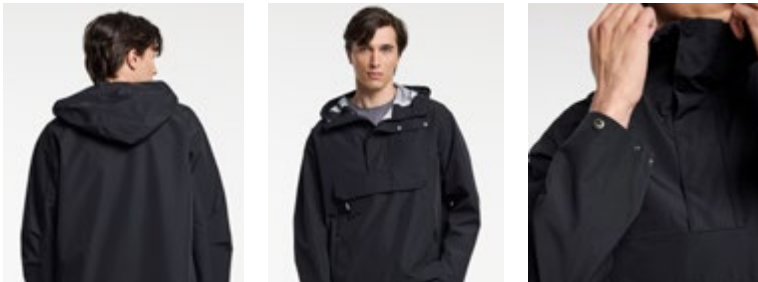
Drizzle Anorak Unisex

ART.NO. 46018632

ABC

SEK 1000
EUR 100
DKK 700

Drizzle Anorak Unisex is a versatile and protective anorak designed for outdoor use in changing weather conditions. Built with MPC Extreme, it offers reliable protection against wind and rain while maintaining breathability, making it a dependable choice for both everyday wear and outdoor adventures. The adjustable hood features both vertical and horizontal adjustment for a secure fit, while adjustable cuffs and an adjustable hem help keep the elements out. It is equipped with two zippered front pockets and a spacious kangaroo pocket at the front, providing both secure and easy-access storage. A functional anorak with a relaxed silhouette, ready to handle whatever the day brings.



705 SAND

999 BLACK

FEATURES

- Adjustable hood both vertical and horizontal adjustment.
- Two front pockets with zippers.
- Kangaroo pocket at front.
- Adjustable hem.
- Adjustable cuffs.

SHELL FABRIC 1

- MPC Extreme
- 2.5 Layer
- WP 10 000 mm
- MP 10 000 g/m²/24h
- PFC-free water repellent finish
- 100% Recycled Polyester

SIZES

- XS-XXL



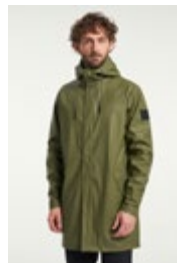
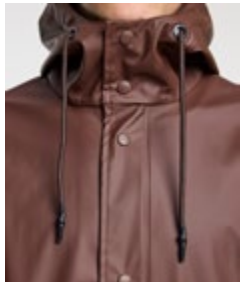
Apelviken Rain Coat Men

ART.NO. 465017644

ABC

SEK 900
EUR 90
DKK 600

Apelviken has a classic PU raincoat design with a straight silhouette and soft jersey fabric on the inside. This coat has adjustable cuffs and a slit at the back that gives you full mobility. It has a 5.000mm waterproof rating, a comfortable fixed hood, and sealed seams to keep you dry and comfortable.



649 OLIVE



999 BLACK



964 DARK BLUE



873 BROWN

FEATURES

- Adjustable cuffs.
- Adjustable hood vertical.
- Articulated sleeves.
- Fixed hood.
- Welded seams.
- Two front pockets.

- SHELL FABRIC 1
- WP 5 000 mm
- Tricot backing
- 100% Polyurethane

SIZES

- S-4XL

Miyabi Hybrid Zip Men

ART.NO. 46018607

ABC

SEK 1200
EUR 120
DKK 900

Miyabi Hybrid Zip Men is a functional and adaptable hybrid layer built for outdoor activities in cooler weather. The quilted padding provides warmth, while the sides and sleeves in power comfort flat fleece with a grid back enhance breathability and thermal regulation, creating a well-balanced combination of insulation and comfort. Designed with articulated sleeves for enhanced mobility and a folded chinguard for added comfort, it also includes a zippered chest pocket and two zippered front pockets to keep your essentials secure. Elastic bindings at the hem and sleeve endings provide a snug and flexible fit. A dependable hybrid layer that performs across a wide range of outdoor activities.



967 GREY



705 SAND



550 BLUE

FEATURES

- Articulated sleeves.
- Quilted padding.
- Folded chinguard.
- Chest pocket with zipper.
- Two front pockets with zippers.
- Elastic binding at hem & sleeve ends.

- **SHELL FABRIC 1**
- Lightweight
- Stretch fabric with quilted thin insulation
- 93% Polyamide
- 7% Elastane
- **SHELL FABRIC 2**
- Power comfort
- Stretch
- Quick dry
- Flat fleece with grid back
- Thermal regulating
- 53% Recycled Polyester
- 37% Polyester
- 10% Elastane

SIZES

- S-3XL



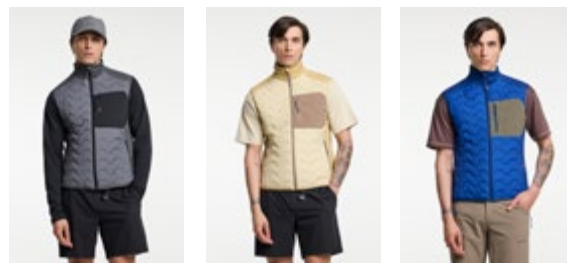
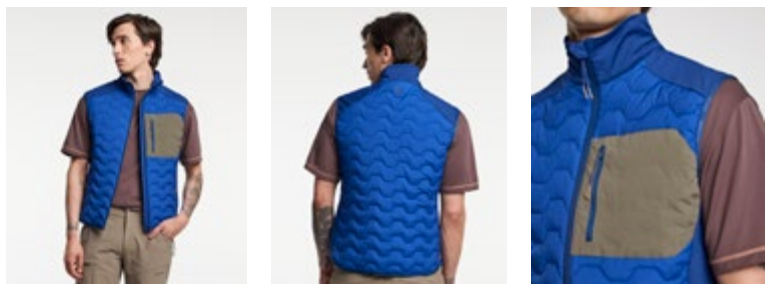
Miyabi Hybrid Vest Men

ART.NO. 46018609

ABC

SEK 1000
EUR 100
DKK 700

Miyabi Hybrid Vest Men is a versatile and functional vest designed to keep your core warm while allowing full freedom of movement. The quilted padding delivers lightweight insulation, while the sides in power comfort flat fleece with a grid back enhance breathability and thermal regulation, making it an ideal layer for outdoor activities in cooler temperatures. Equipped with a zippered chest pocket and two zippered front pockets, it offers convenient storage for your essentials. Elastic bindings at the hem and armholes ensure a comfortable and flexible fit. A reliable layering piece that adds warmth without slowing you down.



967 GREY

705 SAND

550 BLUE

FEATURES

- Quilted padding.
- Folded chinguard.
- Two front pockets with zippers.
- Chest pocket with zipper.
- Elastic binding at hem.
- Elastic bindings at armhole.

- **SHELL FABRIC 1**
- Lightweight
- Stretch fabric with quilted thin insulation
- 93% Polyamide
- 7% Elastane
- **SHELL FABRIC 2**
- Power comfort
- Stretch
- Quick dry
- Flat fleece with grid back
- Thermal regulating
- 53% Recycled Polyester
- 37% Polyester
- 10% Elastane

SIZES

- S-3XL



Mori Fleece Men

ART.NO. 46018665

ABC

SEK 700
EUR 70
DKK 500

Mori Fleece is a functional mid layer made for outdoor activities as well as everyday wear. The soft fleece fabric delivers warmth without restricting movement, making it a reliable choice for everything from hiking to daily use. It features a folded chinguard for extra comfort and two zippered front pockets to keep your essentials secure. Elastic cuffs and an adjustable hem with cord provide a flexible fit that helps retain warmth in cooler conditions. A timeless fleece designed for an active outdoor lifestyle.



967 GREY

873 BROWN

575 DARK BLUE

FEATURES

- Folded chinguard.
- Two front pockets with zippers.
- Elastic waist with cord adjustment.
- Elastic at cuffs.

- **SHELL FABRIC 1**
- Fleece
- Stretch
- Quick dry
- 100% Recycled Polyester
- **SHELL FABRIC 2**
- Ripstop
- Stretch
- Quick dry
- 94% Recycled Polyamide
- 6% Elastane

SIZES

- S-4XL



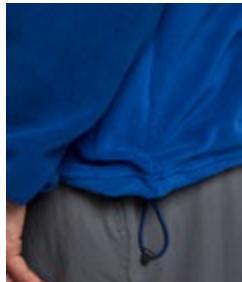
Sydney Fleece Men

ART.NO. 46018680

ABC

SEK 700
EUR 70
DKK 500

Sydney Fleece Men is a warm and versatile fleece designed for outdoor comfort in cooler conditions. The soft fabric provides a cozy feel while remaining lightweight and easy to layer, making it a natural choice for everything from relaxed days outside to more active use. It features a zippered chest pocket for convenient storage, while the adjustable hem and elastic sleeve endings ensure a comfortable fit that helps keep warmth in. A reliable and easy-to-wear fleece that quickly becomes a go-to layer when the temperature drops.



940 GREY



862 TAUPE



731 BEIGE



550 BLUE

FEATURES

- Chest pocket with zipper.
- Adjustable hem.
- Elastic binding at sleeve ends.

SHELL FABRIC 1

- Fleece
- Stretch
- Quick dry
- 100% Recycled Polyester

SIZES

- S-4XL



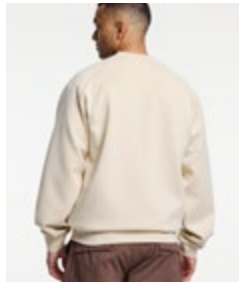
Yuno Sweater Men

ART.NO. 46018677

ABC

SEK **800**
EUR **80**
DKK **600**

Yuno Sweater Men is a comfortable and flexible long sleeve designed for active everyday use. Made from a blended casual fabric with stretch, it moves naturally with your body while maintaining a smooth and supportive feel throughout the day. With its clean design, round neck, and long sleeves, it's an easy piece to wear on its own or as a base layer when extra comfort and mobility are key. A go-to sweater that combines softness, flexibility, and effortless versatility.



978 ANTRACITHE

437 MAUVE PURPLE

014 CREAM

FEATURES

- Round neck.
- Long sleeve.

- SHELL FABRIC 1
- Power comfort
- Stretch
- 80% Recycled Polyester
- 20% Elastane

SIZES

- S-3XL



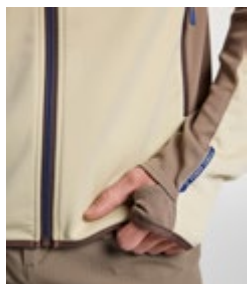
Lazer Hoodie Zip Men

ART.NO. 46018590

ABC

SEK 900
EUR 90
DKK 700

Lazer Hoodie Zip Men is a lightweight and functional hoodie designed for active outdoor use. With a focus on movement and comfort, it delivers a technical feel in a clean and versatile silhouette, making it ideal for everything from training sessions to fast-paced adventures. The full zip at the front allows for easy ventilation and flexibility, while the elastic hood ensures a snug fit in changing conditions. Extended sleeves with thumb loops add coverage and keep the garment in place, and the folded chinguard enhances comfort around the neck. Reflective details improve visibility in low light, and a zippered side pocket keeps your essentials secure. Elastic bindings at the hem and sleeve endings create a streamlined fit that moves with you. A performance-driven hoodie ready for action.



967 GREY



705 SAND

FEATURES

- Reflective details.
- Elastic at hood.
- Folded chinguard.
- Two front pockets with zippers.
- Chest pocket with zipper.
- One sleeve pocket with zipper.
- Elastic binding at hem & sleeve ends.

- **SHELL FABRIC 1**
- Lightweight
- Quick dry
- Stretch
- Thermal regulating
- High breathability
- 100% Recycled Polyester
- **SHELL FABRIC 2**
- Mesh for ventilation
- 100% Recycled Polyester

SIZES

- S-3XL



Waffle Long Sleeve Men

ART.NO. 46018736

ABC

SEK 600
EUR 60
DKK 450

Waffle Long Sleeve Men is a soft and functional top designed for comfort during active outdoor days. The waffle-structured fabric enhances breathability while offering a lightweight feel, helping to regulate temperature and keep you comfortable across changing conditions. Made from a blend of recycled polyester and elastane, it combines stretch and durability with a more sustainable approach. The moisture-wicking and quick-drying properties keep you feeling dry and fresh, whether you're on the move or layering up. With its clean design, round neck, and long sleeves, it's a versatile piece that works just as well on its own as under a jacket.



999 BLACK

913 LIGHT GREY

687 GREY GREEN

580 DARK NAVY

FEATURES

- Round neck.
- Long sleeve.

SHELL FABRIC 1

- Waffle structure
- Moisture-wicking
- Quick dry
- 95% Recycled Polyester
- 5% Elastane

SIZES

- S-3XL



Camper Overshirt 2.0

ART.NO. 46018745

ABC

SEK 1000
EUR 100
DKK 700

Camper Overshirt Men is a versatile and durable overshirt designed for outdoor life and everyday exploration. Made from ripstop fabric, it offers a lightweight yet robust feel with quick-drying properties, making it a reliable choice for changing conditions and active days. The clean design is combined with practical functionality, featuring two chest pockets and two zippered front pockets for convenient and secure storage. A hanger at the outside back adds everyday ease, whether you're on the move or taking a break. Easy to layer and built to last, it's a go-to piece that works across seasons and settings.



999 BLACK



913 LIGHT GREY



873 BROWN

FEATURES

- Hanger at outside back.
- Two front pockets with zippers.
- Two chest pockets.

SHELL FABRIC 1

- Ripstop
- Durable
- Quick dry
- 100% Recycled Polyamide

SIZES

- S-3XL



Camper Packable Shirt Men

ART.NO. 46018687

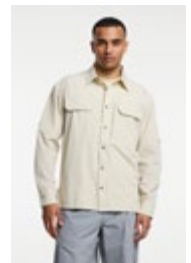
ABC

SEK 1000
EUR 100
DKK 700

Camper Packable Shirt Men is a lightweight and versatile shirt designed for travel and outdoor adventures where space and flexibility matter. Easy to pack and always ready to go, it's made from a stretch fabric with quick-drying properties that keeps you comfortable on the move. The design combines a clean look with practical functionality, featuring two chest pockets including one with a zipper for secure storage. Lightweight and easy to wear, it adapts effortlessly to changing plans and conditions. A smart and reliable piece to bring along, wherever the journey takes you.



999 BLACK



725 LIGHT BEIGE

FEATURES

- Packable.
- Two chest pockets.
- Chest pocket with zipper.

SHELL FABRIC 1

- Stretch
- Lightweight
- Quick dry
- 88% Recycled Polyamide
- 12% Elastane

SIZES

- S-3XL



Trail Shirt Men

ART.NO. 46018688

ABC

SEK **1000**
EUR **100**
DKK **700**

Trail Shirt Men is a lightweight and versatile shirt designed for active outdoor days where comfort and performance go hand in hand. Made from 100% recycled polyester with stretch and quick-drying properties, it offers a smooth, breathable feel that keeps you comfortable as the pace shifts throughout the day. The clean design is combined with practical functionality, featuring two chest pockets including one with a zipper for secure storage. Easy to wear and easy to layer, it adapts effortlessly from trail to travel and everything in between. A dependable shirt built for movement, comfort, and long days outdoors.



967 GREY



933 LIGHT GREY

FEATURES

- Two chest pockets.
- Chest pocket with zipper.

- **SHELL FABRIC 1**
- Stretch
- Lightweight
- Quick dry
- 100% Recycled Polyester

SIZES

- S-3XL



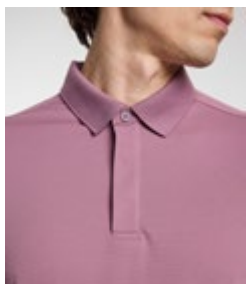
Block Polo Men

ART.NO. 46018725

ABC

SEK 500
EUR 50
DKK 400

Block Polo Men is a clean and versatile polo designed for everyday outdoor wear with a refined, sporty look. The comfortable fabric and classic silhouette make it an easy choice for everything from casual days to more active settings. It features a ribbed collar and a three-button opening that adds a timeless touch, while side slits enhance freedom of movement and overall comfort. A polished yet relaxed piece that fits seamlessly into an active and modern wardrobe.



748 BROWN



705 SAND



550 BLUE



437 MAUVE PURPLE

FEATURES

- Rib at collar.
- Slit at sides.
- 3-hole button opening.

- **SHELL FABRIC 1**
- Pique
- Stretch
- Quick dry
- Moisture-wicking
- 100% Recycled Polyester
- **SHELL FABRIC 2**
- Pique
- Stretch
- Quick dry
- Moisture-wicking
- 100% Recycled Polyester

SIZES

- S-3XL



Zenith Polo Men

ART.NO. 46018682

ABC

SEK 500
EUR 50
DKK 400

Zenith Polo Men is a refined and comfortable polo designed for everyday outdoorwear with a clean, modern look. The soft fabric and structured details create a polished feel while maintaining the ease needed for active days. It features a flat knit collar and matching sleeve endings for a more elevated expression, along with a three-button opening that adds a classic touch. Side slits provide enhanced comfort and freedom of movement. A versatile polo that balances style and function with a confident, effortless look.



967 GREY

933 LIGHT GREY

873 BROWN

592 DARK NAVY

FEATURES

- Flat knit collar.
- Flat knit sleeve ends.
- Slit at sides.
- 3-hole button opening.

SHELL FABRIC 1

- Pique
- Stretch
- Quick dry
- Moisture-wicking
- 100% Recycled Polyester

SIZES

- S-3XL



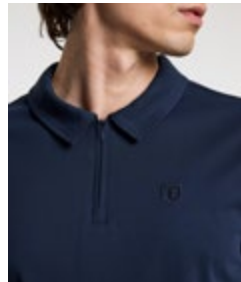
Comfort Quick Dry Polo Men

ART.NO. 46018719

ABC

SEK 500
EUR 50
DKK 400

Comfort Quick Dry Polo Men is a functional and versatile polo designed for active days when comfort and performance matter. Made from a stretch pique fabric with moisture-wicking and quick-drying properties, it helps keep you dry and comfortable even as the temperature rises or the pace increases. The clean design features a thin, soft zip opening for a modern and sporty look, while side slits add mobility and a relaxed feel throughout the day. Soft, breathable, and easy to wear, it's a natural choice for everything from outdoor activities to everyday use in warmer conditions. A reliable polo that keeps you feeling fresh from morning to evening.



999 BLACK

862 TAUPE

687 GREY GREEN

592 DARK NAVY

FEATURES

- Slit at sides.

- SHELL FABRIC 1
- Pique
- Stretch
- Quick dry
- Moisture-wicking
- 50% Recycled Polyester
- 50% Polyester

SIZES

- S-4XL



TXlite Melange Polo Men

ART.NO. 465018395

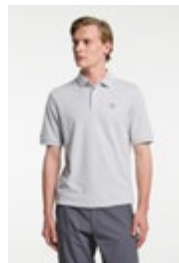
ABC

SEK **600**
EUR **60**
DKK **450**

The TXlite Melange Polo is a stylish quick-drying polo shirt for men featuring a classic collar and three button look made in 100% recycled polyester. It has a discreet Tenson logo on the arm and a slit at the sides for increased mobility. Wear it on the golf course, when you're out sailing or for your everyday adventures. You can never have too many polo shirts as they are such a versatile wardrobe staple; they're as comfortable as a T-shirt but with a smarter look and work well in most settings.



999 BLACK



913 LIGHT GREY



748 BROWN



575 DARK BLUE



437 MAUVE PURPLE

FEATURES

- Flat knit collar.
- Flat knit sleeve ends.
- Slit at sides.
- 3-hole button opening.

SHELL FABRIC 1

- Pique
- Stretch
- Quick dry
- Moisture-wicking
- 100% Recycled Polyester

SIZES

- S-5XL



TXlite Blend Polo Men

ART.NO. 465018425

ABC

SEK 500
EUR 50
DKK 400

The TXlite Tri-Blend Polo is a quick drying cotton feel polo shirt for men featuring a classic collar and three button look, made in organic cotton, recycled polyester and spandex. It has a discreet Tenson logo on the left arm and a slit at the sides for increased mobility. You can never have too many polo shirts as they are such a versatile wardrobe staple; they're as comfortable as a T-shirt but with a smarter look and works well in most settings.



999BLACK



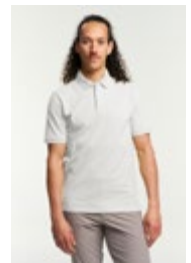
687 GREY GREEN



590 DARK NAVY



434 PURPLE



001 WHITE

FEATURES

- Flat knit collar.
- Flat knit sleeve ends.
- Slit at sides.
- 3-hole button opening.

SHELL FABRIC 1

- Pique
- Stretch
- Quick dry
- Moisture-wicking
- 55% Cotton
- 42% Recycled Polyester
- 3% Elastane

SIZES

- S-5XL



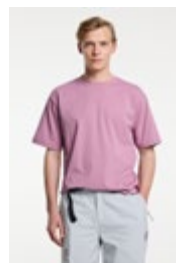
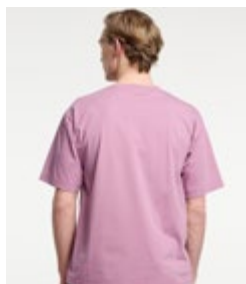
Cool Tee Men

ART.NO. 46018579

ABC

SEK 400
EUR 40
DKK 300

Cool Tee Men is a lightweight and high-comfort t-shirt made for warm weather and active outdoor use. Made from a cotton blend fabric, it offers a soft and breathable feel that keeps you comfortable throughout the day, whether you're hiking, traveling, or simply enjoying time outside. Easy to wear and versatile, it combines comfort with a clean design. The round neck and short sleeves make it a natural choice for sunny days and high activity levels. A go-to piece when staying cool matters most.



999 BLACK

705 SAND

434 PURPLE

FEATURES

- Round neck.
- Short sleeve.

- SHELL FABRIC 1
- Moisture-wicking
- Cooling effect
- UPF 50+
- 74% Organic Cotton
- 26% Recycled Polyester with Sorona®

SIZES

- S-3XL



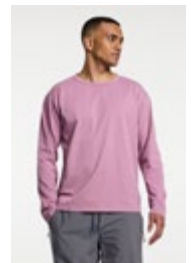
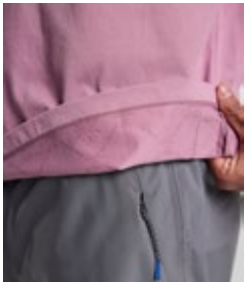
Cool Tee Long Sleeve Men

ART.NO. 46018581

ABC

SEK 500
EUR 50
DKK 400

Cool Tee Long Sleeve Men is a lightweight and versatile long sleeve built for warm weather and active use. Made from a cotton blend fabric, it offers soft and breathable comfort while keeping you comfortable during long days in the sun or on the move. The long sleeves add extra coverage when needed, and the round neck with a clean design makes it easy to wear across different settings. A dependable choice when you need both comfort and coverage.



999 BLACK

705 SAND

434 PURPLE

FEATURES

- Round neck.
- Long sleeve.

SHELL FABRIC 1

- Moisture-wicking
- Cooling effect
- UPF 50+
- 74% Organic Cotton
- 26% Recycled Polyester with Sorona®

SIZES

- S-3XL



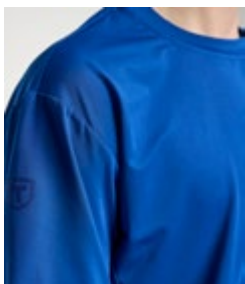
Trail Tee Men

ART.NO. 46018670

ABC

SEK 300
EUR 30
DKK 200

Trail Tee Men is a lightweight and comfortable t-shirt designed for active days outdoors. Made from a quick-drying stretch fabric, it offers a smooth feel against the skin while keeping you comfortable when the pace picks up, whether you're on the trail, traveling, or enjoying warm days outside. The classic round neck and short sleeve design create a clean and versatile look that works just as well on its own as layered. An easy favorite you'll reach for on every outdoor escape.



967 GREY



873 BROWN



550 BLUE

FEATURES

- Round neck.
- Short sleeve.

- SHELL FABRIC 1
- Quick dry
- Lightweight
- Stretch
- 86% Recycled Polyester
- 14% Elastane

SIZES

- S-3XL



Trail Tee Long Sleeve Men

ART.NO. 46018672

ABC

SEK **400**
EUR **40**
DKK **300**

Trail Tee Longsleeve Men is a lightweight and versatile long sleeve designed for active outdoor use. Made from a quick-drying stretch fabric, it offers comfort and flexibility across a range of conditions, making it ideal for layering or wearing on its own during cooler mornings and changing weather. The round neck and clean design give it a timeless look, while the long sleeves offer extra coverage when you need it most. A dependable layer for days that start early and keep going.



967 GREY

873 BROWN

550 BLUE

FEATURES

- Round neck.
- Long sleeve.

SHELL FABRIC 1

- Quick dry
- Lightweight
- Stretch
- 86% Recycled Polyester
- 14% Elastane

SIZES

- S-3XL



Camper Cargo Pants Men

ART.NO. 46018596

ABC

SEK 1000
EUR 100
DKK 700

Camper Cargo Pants Men are lightweight and durable outdoor pants designed for movement, versatility, and long days on the go. Made from stretch ripstop fabric, they combine flexibility with a tough, resilient feel, while quick-drying properties keep you comfortable as conditions change. Articulated knees enhance mobility, and the adjustable leg endings allow you to adapt the fit depending on activity and footwear. The adjustable waist with an integrated belt ensures a secure and personalized fit, while a hanger at the outside back adds everyday convenience. Multiple zippered pockets, including front, back, and leg pockets, keep your essentials safely stored and always within reach. Built for active use and spontaneous plans, these are pants you can rely on from morning to night.



978 ANTRACITHE

933 LIGHT GREY

873 BROWN

FEATURES

- Belt in waist.
- Hanger at outside back.
- Articulated knees.
- Two front pockets with zippers.
- One back pocket with zipper.
- One leg pocket with zipper.
- Adjustable leg ending.

SHELL FABRIC 1

- Stretch
- Ripstop
- Durable
- Quick dry
- 94% Recycled Polyamide
- 6% Elastane

SIZES

- S-XXL



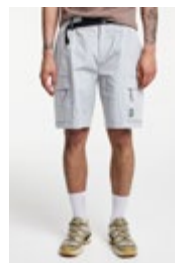
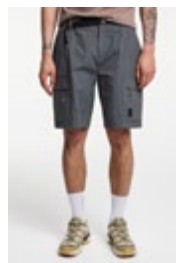
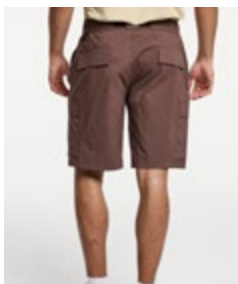
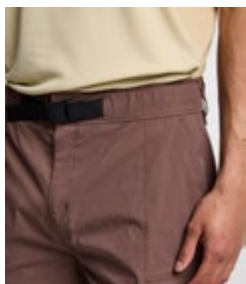
Camper Hike Shorts Men

ART.NO. 46018744

ABC

SEK 800
EUR 80
DKK 600

Camper Hike Shorts Men are durable and easy-to-wear shorts designed for active outdoor use in warm conditions. Crafted from stretch rip-stop fabric, they combine flexibility with a tough, long-lasting feel, while quick-drying properties help you stay comfortable from start to finish. An elastic waist with an integrated belt ensures a secure and adjustable fit, while multiple pockets, including two slanted open front pockets, two zippered leg pockets, and two back pockets, provide practical storage for your gear. Designed to keep up with your pace, these shorts are a reliable choice for hikes, travel, and everyday outdoor adventures.



978 ANTRACITHE

933 LIGHT GREY

873 BROWN

FEATURES

- Belt in waist.
- Two back pockets.
- Two leg pockets with zippers.
- Two slanted open front pockets.
- Elastic waist.

SHELL FABRIC 1

- Stretch
- Ripstop
- Durable
- Quick dry
- 94% Recycled Polyamide
- 6% Elastane

SIZES

- S-XXL



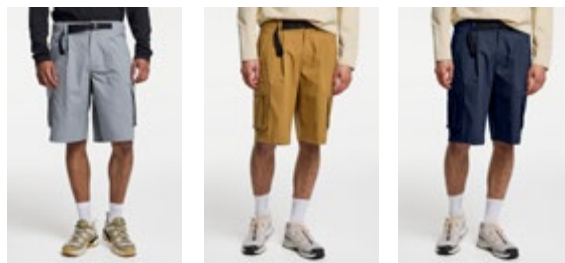
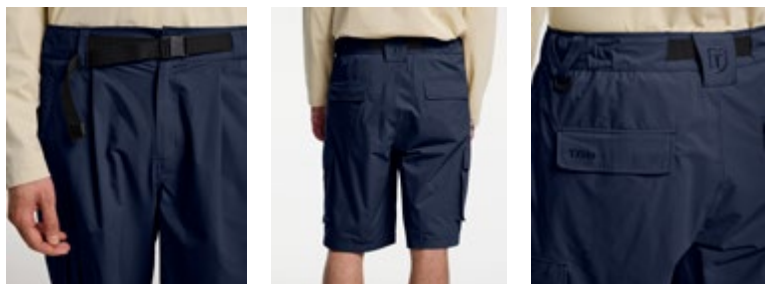
Didier Cargo Shorts Men

ART.NO. 46018740

ABC

SEK 700
EUR 70
DKK 500

Didier Cargo Shorts Men are lightweight and durable shorts designed for active outdoor days where functionality and comfort go hand in hand. Made from stretch ripstop fabric, they offer excellent mobility with a tough, resilient feel, while the quick-drying properties keep you comfortable as the day unfolds. Equipped with an adjustable waist and integrated belt, they provide a secure and personalized fit. Multiple storage options include two zippered front pockets, two leg pockets on the sides, and two back pockets, giving you plenty of space for your essentials. Built to handle long days, shifting plans, and everything in between, these are shorts you can rely on when the pace picks up.



940 GREY

853 BROWN

592 DARK NAVY

FEATURES

- Belt in waist.
- Two front pockets with zippers.
- Two leg pockets on the sides.
- Two back pockets.
- Adjustable waist.

SHELL FABRIC 1

- Lightweight
- Stretch
- Ripstop
- Durable
- Quick dry
- 50% Recycled Polyester
- 50% Polyester

SIZES

- S-XXL



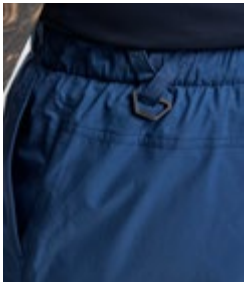
Camper Quick Dry Shorts Men

ART.NO. 46018658

ABC

SEK 600
EUR 60
DKK 450

Camper Quick Dry Shorts Men are lightweight and durable shorts built for active days in warm conditions. Crafted from stretch ripstop fabric, they combine flexibility with a tough, long-lasting feel, while quick-drying properties help you stay comfortable as the day heats up. The adjustable waist with an integrated belt provides a secure fit, and the shorts feature two slanted open front pockets along with a zippered back pocket for practical storage. Clean, functional, and easy to wear, they are ready for everything from laid-back days to more active outdoor moments.



999 BLACK



579 DARK BLUE

FEATURES

- Belt in waist.
- One back pocket with zipper.
- Two slanted open front pockets.
- Adjustable waist.

- SHELL FABRIC 1
- Lightweight
- Stretch
- Ripstop
- Durable
- Quick dry
- 50% Recycled Polyester
- 50% Polyester

SIZES

- S-XXL



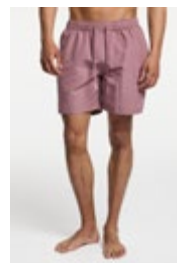
Ocean Swim Shorts Men

ART.NO. 465018380

ABC

SEK 400
EUR 40
DKK 300

The Ocean swim shorts are your essential beach shorts made from quick drying 100% recycled polyester. They come in a regular fit and feature mesh inner pants, pockets on the sides and a back pocket. Features a drawcord around the waist for easy adjustment.



967 GREY

873 BROWN

575 DARK BLUE

437 MAUVE PURPLE

FEATURES

- One back pocket.
- Fake fly.
- Underpants in mesh.
- Two slanted open front pockets.
- Elastic waist with cord adjustment.

- SHELL FABRIC 1
- Lightweight
- Quick dry
- 100% Recycled Polyester

SIZES

- S-3XL



Drizzle Cap Unisex

ART.NO. 46018548

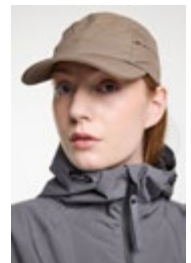
ABC

SEK	400
EUR	40
DKK	300

Drizzle Cap Unisex is a functional and weather-protective cap designed for outdoor use in wet and windy conditions. Made with MPC, it is water-repellent, windproof, and finished with a PFC-free water-repellent treatment, keeping you comfortable when the weather turns. The adjustable strap at the back allows for a personalized fit, ensuring the cap stays securely in place throughout the day. A practical and easy-to-wear accessory that adds reliable protection to any outdoor setup.



999 BLACK



748 BROWN

FEATURES

- Waterproof.
- Adjustable strap.

SHELL FABRIC 1

- MPC
- Waterproof
- Windproof
- PFC-free water repellent finish
- 100% Recycled Polyester

SIZES

- S/M-L/XL



Camper Cap Unisex

ART.NO. 46018654

ABC

SEK 300
EUR 30
DKK 200

Camper Cap Unisex is a lightweight and durable cap designed for active days outdoors. Made from stretch ripstop fabric, it combines flexibility with a tough, long-lasting feel, while quick-drying properties keep you comfortable as conditions shift. The adjustable strap at the back ensures a secure and personalized fit, making it easy to wear throughout the day. Clean in design and built for versatility, it's a go-to accessory for everything from hikes to travel and everyday outdoor use.



967 GREY



873 BROWN



705 SAND

FEATURES

- Adjustable strap.

- SHELL FABRIC 1
- Stretch
- Ripstop
- Durable
- Quick dry
- 94% Recycled Polyamide
- 6% Elastane

SIZES

- S/M-L/XL



Apelviken Rain Hat Unisex

ART.NO. 465018253

ABC

SEK **300**
EUR **30**
DKK **200**

This headwear icon, with its soft and comfortable tricot backing and welded seams, matches our Apelviken PU collection in terms of both its design and quality. Comes in sizes S/M and L/XL.



999 BLACK

649 OLIVE

FEATURES

- Fleece lining.

- SHELL FABRIC 1
- WP 5 000 mm
- Tricot backing
- 100% Polyurethane

SIZES

- S/M-L/XL

Daily Comfort Sock 2-pack Unisex

ART.NO. 46018656

ABC

SEK 200
EUR 20
DKK 150

Daily Comfort Sock 2-pack Unisex is a comfortable and durable everyday essential designed to keep you feeling good from morning to evening. Made from a soft cotton-blend fabric, they offer a smooth and breathable feel that works just as well for active days as for everyday wear. The ribbed construction ensures a secure fit while maintaining shape over time, providing lasting comfort and reliability. Easy to wear and built to last, these are socks you'll reach for day after day.



437 MAUVE PURPLE

001 WHITE

FEATURES

- Ribbed construction designed for lasting comfort and durability.
- Soft cotton-blend fabric ensures all-day comfort.

SHELL FABRIC 1

- Comfort
- Stretch
- Soft
- 65% Cotton
- 25% Polyester
- 10% Elastane

SIZES

- 36/39-46/48

Performance Sock Unisex

ART.NO. 46018752

ABC

SEK **200**
EUR **20**
DKK **150**

Performance Sock Unisex is a high-performance sock designed for maximum comfort and precision during active use. It features an ultra-thin construction that delivers a lightweight, second-skin feel, perfect for when every detail matters. The smooth knit under the foot provides soft, friction-free comfort, while the piqué knit upper enhances ventilation to keep your feet cool and dry. Extra elastic around the arch ensures a secure fit that stays in place, and the seamless construction minimizes the risk of chafing. A technical sock built for comfort, breathability, and a barely-there feel.



999 BLACK



550 BLUE



001 WHITE

FEATURES

- Ultra-thin construction.
- Smooth knit under the foot for comfort.
- Piqué knit upper for optimal ventilation.
- Extra elastic around the arch keeps the sock securely in place.
- Seamless construction.

SHELL FABRIC 1

- Dri Release
- Thermal regulating
- 98% Recycled Polyamide
- 2% Lycra

SIZES

- 36/39-46/48

Life in motion.

EXPLORE TENSON.COM

TENSON HQ Femvägsskälet 2, 421 50 Västra Frölunda, Sverige.



TENSON®
EST. 1951